

DUNNELLON, FLORIDA

AL-9138 (FAA)

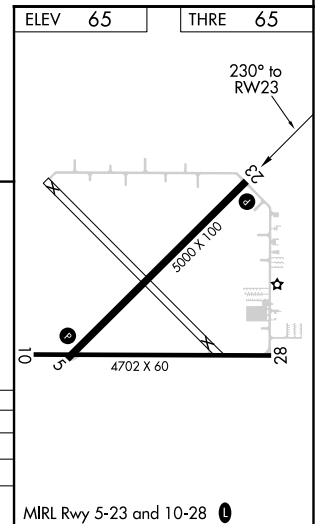
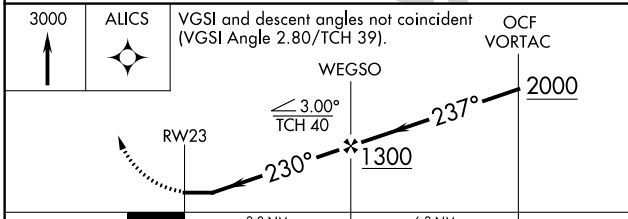
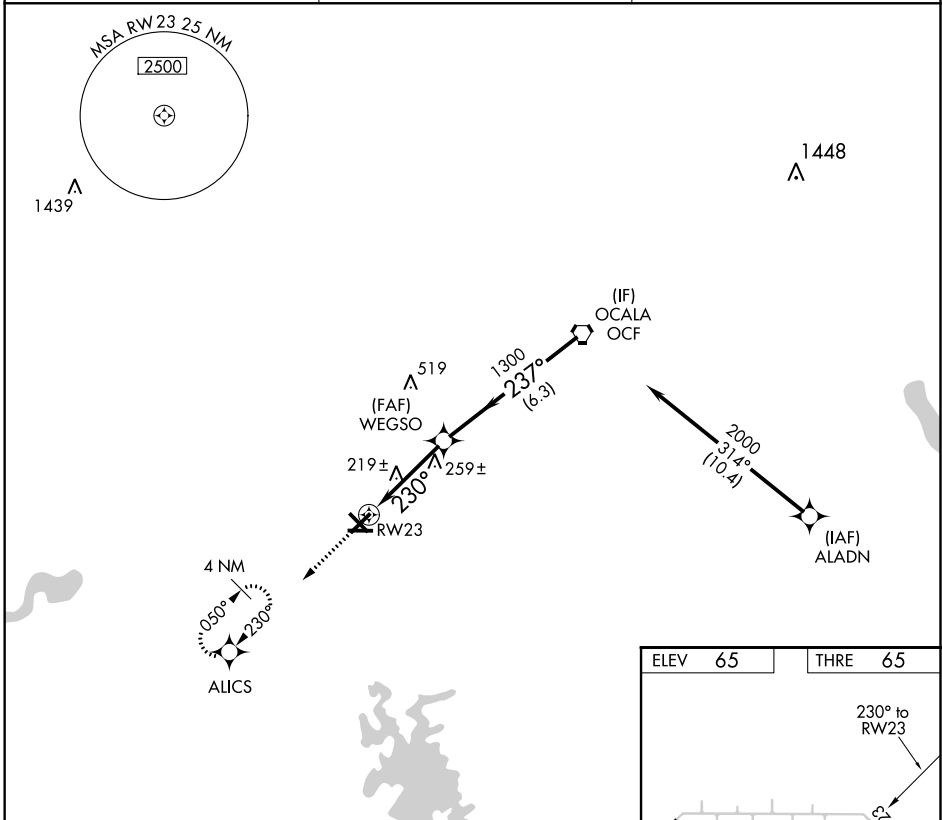
17061

WAAS CH 48828 W23A	APP CRS 230°	Rwy Idg THRE 65 Apt Elev 65	5000
--	------------------------	---	-------------

RNAV (GPS) RWY 23

MARION COUNTY (X35)

NA DME/DME RNP-0.3 NA. Visibility reduction by helicopters NA. Use Ocala altimeter setting, when not received, use Leesburg altimeter setting and increase all MDA 60 feet; and increase LP and LNAV Cats C and D visibility 1/8 mile. Procedure NA at night.	MISSED APPROACH: Climb to 3000 direct ALICS and hold, continue climb-in-hold to 3000.	
	OCALA AWOS-3 128.125	JACKSONVILLE APP CON 118.6 251.15



CATEGORY	A	B	C	D
LP MDA	500-1	435 (500-1)	500-1¼	435 (500-1¼)
LNAV MDA	540-1	475 (500-1)	540-1⅜	475 (500-1⅜)
CIRCLING	540-1 475 (500-1)	560-1 495 (500-1)	560-1½ 495 (500-1½)	620-2 555 (600-2)

DUNNELLON, FLORIDA
Orig 05APR12

29°04'N-82°23'W

RNAV (GPS) RWY 23

MARION COUNTY (X35)

SE-3, 24 MAY 2018 to 21 JUN 2018

SE-3, 24 MAY 2018 to 21 JUN 2018