

SUMMERVILLE, SOUTH CAROLINA

AL-9078 (FAA)

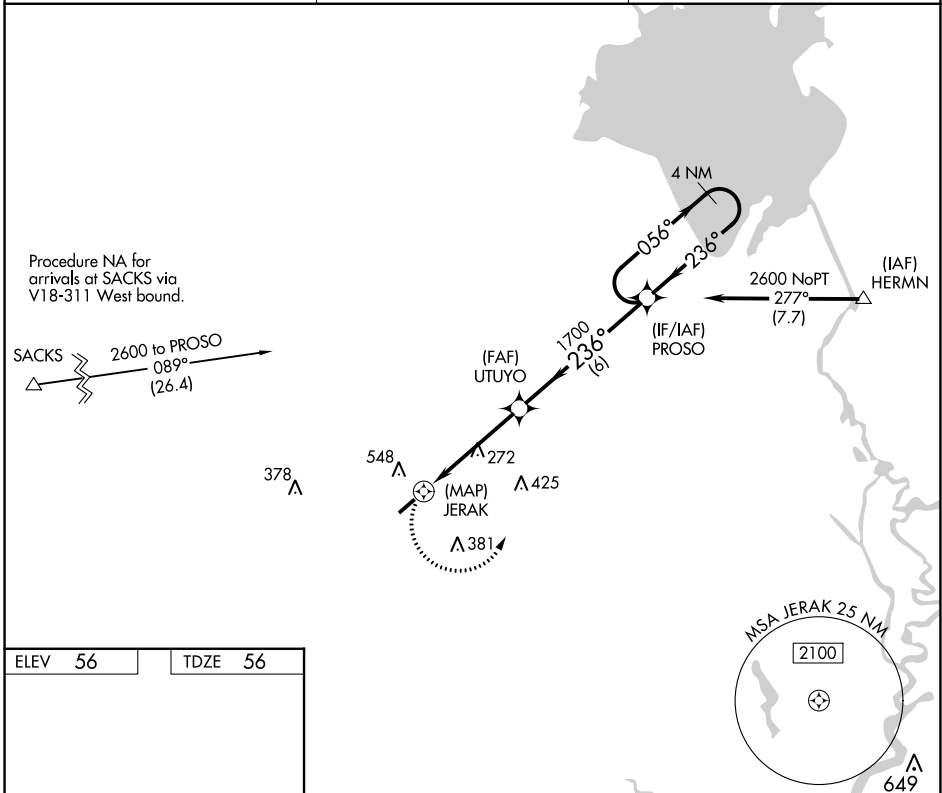
21056

APP CRS	Rwy Idg	5000
236°	TDZE	56
	Apt Elev	56

RNAV (GPS) RWY 24

SUMMERVILLE (DYB)

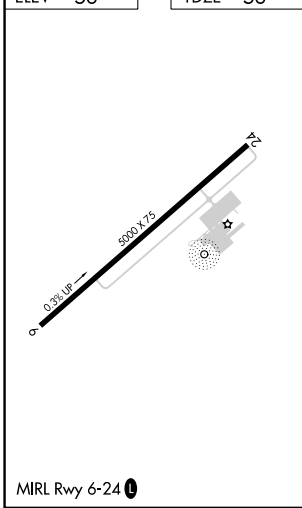
RNP APCH.		MISSED APPROACH: Climbing left turn to 2600 direct PROSO and hold.
<p>▼ Straight-in/Circling Rwy 24 NA at night. ▲ Rwy 24 helicopter visibility reduction below 1 SM NA.</p>		
AWOS-3 119.575	CHARLESTON APP CON 120.7 306.925	UNICOM 123.0 (CTAF) ①



SE-2, 30 NOV 2023 to 28 DEC 2023

SE-2, 30 NOV 2023 to 28 DEC 2023

ELEV	56	TDZE	56
------	----	------	----



2600	PROSO	VGSI and descent angles not coincident.		4 NM
				Holding Pattern
0.5		4.5 NM		6 NM
CATEGORY	A	B	C	D
LNAV MDA	540-1	484 (500-1)	540-1 ³ / ₈ 484 (500-1 ³ / ₈)	NA
C CIRCLING	860-1 804 (900-1)	860-1 ¹ / ₄ 804 (900-1 ¹ / ₄)	860-2 ¹ / ₄ 804 (900-2 ¹ / ₄)	NA

SUMMERVILLE, SOUTH CAROLINA
 Orig-C 08NOV18

33°04'N-80°17'W

RNAV (GPS) RWY 24

SUMMERVILLE (DYB)