

ENTERPRISE, ALABAMA

AL-6568 (FAA)

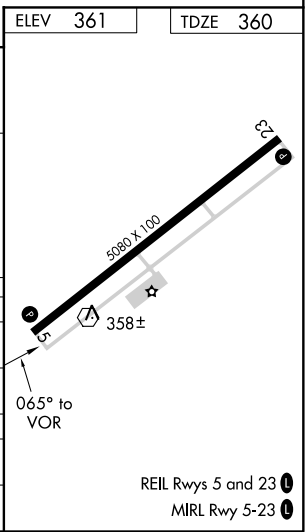
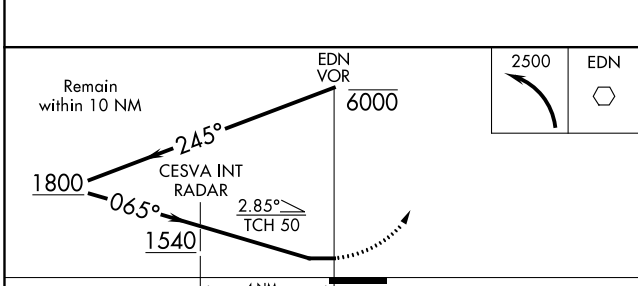
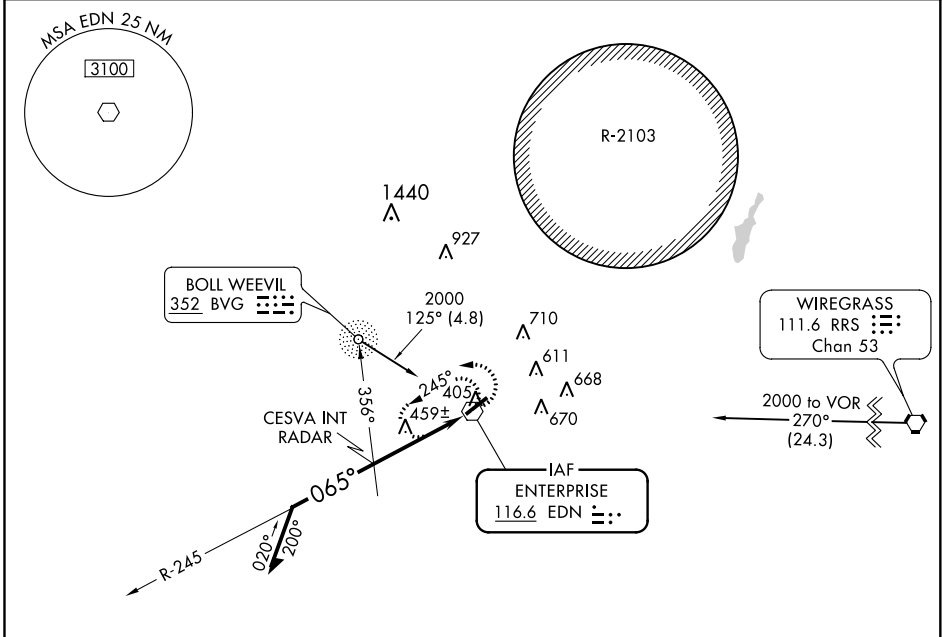
16147

VOR EDN 116.6	APP CRS 065°	Rwy Idg 5080
		TDZE 360
		Apt Elev 361

VOR RWY 5
ENTERPRISE MUNI(EDN)

ADF or RADAR Required.
NA Use Cairns AAF (Fort Rucker) altimeter setting.
MISSED APPROACH:
 Climbing left turn to 2500
 in EDN VOR holding pattern.

AWOS-3 118.9	CAIRNS APP CON * 133.45 239.275	UNICOM 122.8 (CTAF)
------------------------	---	-------------------------------



CATEGORY	A	B	C	D
S-5	1540-1¼ 1180 (1200-1¼)	1540-1½ 1180 (1200-1½)	1540-3 1180 (1200-3)	NA
CIRCLING	1540-1¼ 1179 (1200-1¼)	1540-1½ 1179 (1200-1½)	1540-3 1179 (1200-3)	NA
CESVA INT/RADAR MINIMUMS				
S-5	820-1	460 (500-1)	820-1¼ 460 (500-1¼)	NA
CIRCLING	860-1	499 (500-1)	860-1½ 499 (500-1½)	NA

ENTERPRISE, ALABAMA
Amdt 4A 29JUL10

31°18'N-85°54'W

ENTERPRISE MUNI(EDN)
VOR RWY 5

SE-4, 22 JUN 2017 to 20 JUL 2017

SE-4, 22 JUN 2017 to 20 JUL 2017