

ENTERPRISE, ALABAMA

AL-6568 (FAA)

16147

WAAS CH <b>72614</b> W05A	APP CRS <b>055°</b>	Rwy Idg <b>5080</b> TDZE <b>360</b> Apt Elev <b>361</b>
---------------------------------	------------------------	---------------------------------------------------------------

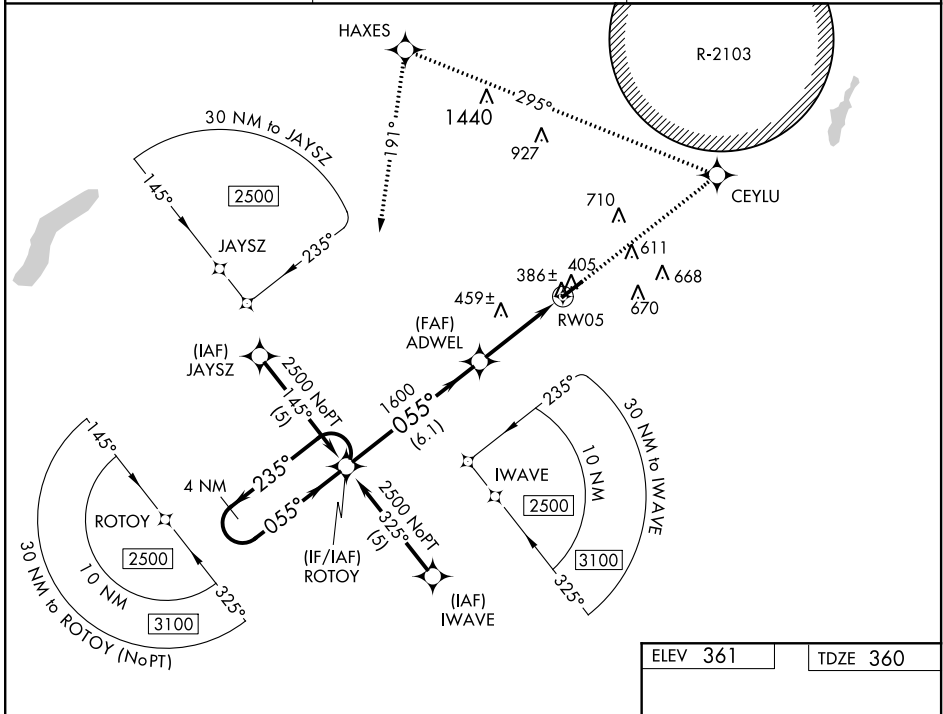
# RNAV (GPS) RWY 5

ENTERPRISE MUNI (EDN)

**▼** Baro-VNAV NA. For uncompensated Baro-VNAV systems, LNAV/VNAV NA below -15°C (5°F) or above 54°C (130°F). DME/DME RNP-0.3 NA.  
**▲** NA Use Cairns AAF (Fort Rucker) altimeter setting.

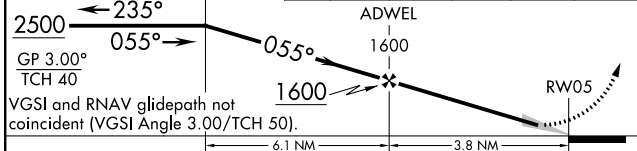
MISSED APPROACH: Climb to 2500 direct CEYLU and left turn via track 295° to HAXES and left turn via track 191° to ROTOY and hold.

AWOS-3 <b>118.9</b>	CAIRNS APP CON★ <b>133.45 239.275</b>	UNICOM <b>122.8(CTAF) 0</b>
------------------------	------------------------------------------	--------------------------------

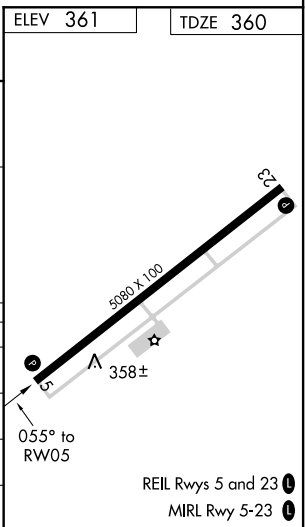


SE-4, 22 JUN 2017 to 20 JUL 2017

SE-4, 22 JUN 2017 to 20 JUL 2017



CATEGORY	A	B	C	D
LPV DA	642-1 282 (300-1)			NA
LNAV/VNAV DA	688-1¼ 328 (400-1¼)			NA
LNAV MDA	760-1 400 (400-1)			NA
CIRCLING	860-1 499 (500-1)		860-1½ 499 (500-1½)	NA



ENTERPRISE, ALABAMA  
Amdt 1A 29JUL10

31°18'N-85°54'W

# ENTERPRISE MUNI (EDN)

## RNAV (GPS) RWY 5