

ENTERPRISE, ALABAMA

AL-6568 (FAA)

18144

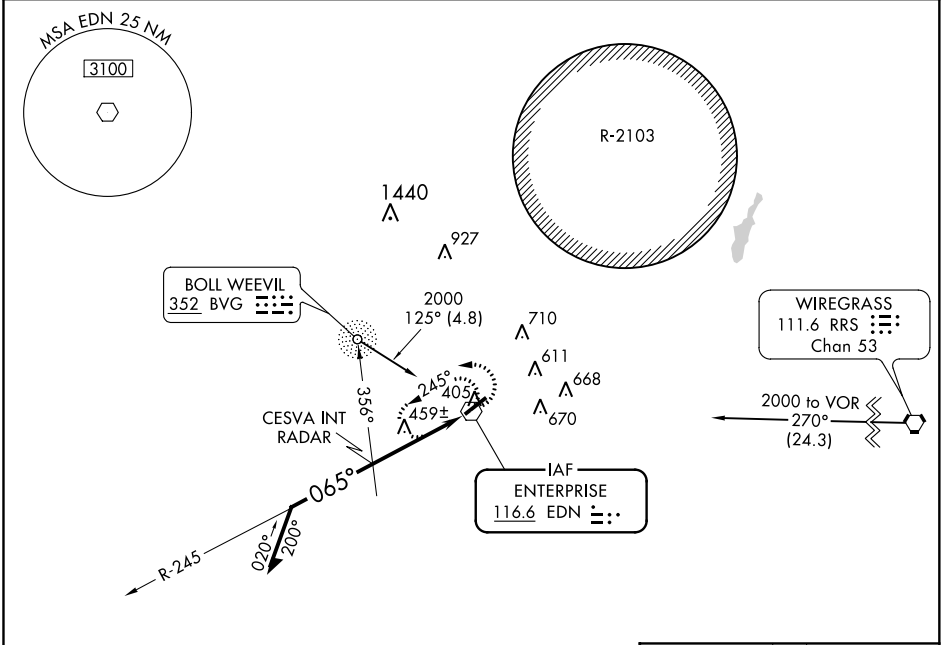
VOR EDN 116.6	APP CRS 065°	Rwy Idg 5080
		TDZE 360
		Apt Elev 361

VOR RWY 5
ENTERPRISE MUNI (EDN)

- ▼ ADF or RADAR Required.
- ▲ NA Use Cairns AAF (Fort Rucker) altimeter setting.

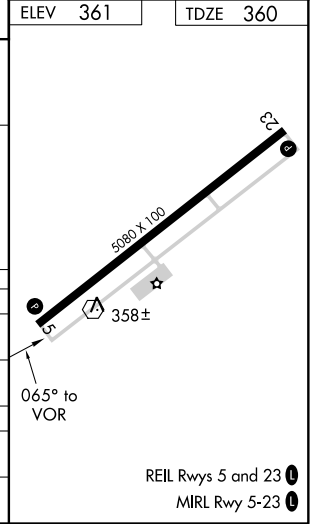
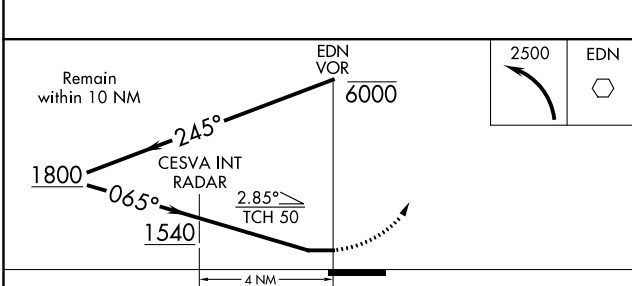
MISSED APPROACH:
Climbing left turn to 2500
in EDN VOR holding pattern.

AWOS-3PT 118.9	CAIRNS APP CON ★ 133.45 239.275	UNICOM 122.8 (CTAF)
--------------------------	---	-------------------------------



SE-4, 24 MAY 2018 to 21 JUN 2018

SE-4, 24 MAY 2018 to 21 JUN 2018



CATEGORY	A	B	C	D
S-5	1540-1¼ 1180 (1200-1¼)	1540-1½ 1180 (1200-1½)	1540-3 1180 (1200-3)	NA
CIRCLING	1540-1¼ 1179 (1200-1¼)	1540-1½ 1179 (1200-1½)	1540-3 1179 (1200-3)	NA
CESVA INT/RADAR MINIMUMS				
S-5	820-1	460 (500-1)	820-1¼ 460 (500-1¼)	NA
CIRCLING	860-1	499 (500-1)	860-1½ 499 (500-1½)	NA

ENTERPRISE, ALABAMA
Amdt 4A 29JUL10

31°18'N-85°54'W

ENTERPRISE MUNI (EDN)
VOR RWY 5