

ENTERPRISE, ALABAMA

AL-6568 (FAA)

18144

WAAS CH 72614 W05A	APP CRS 055°	Rwy Idg 5080 TDZE 360 Apt Elev 361
--	------------------------	---

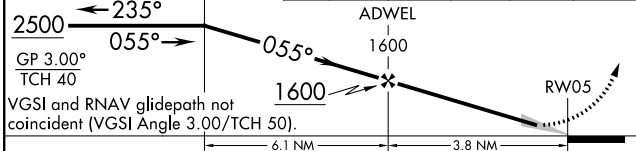
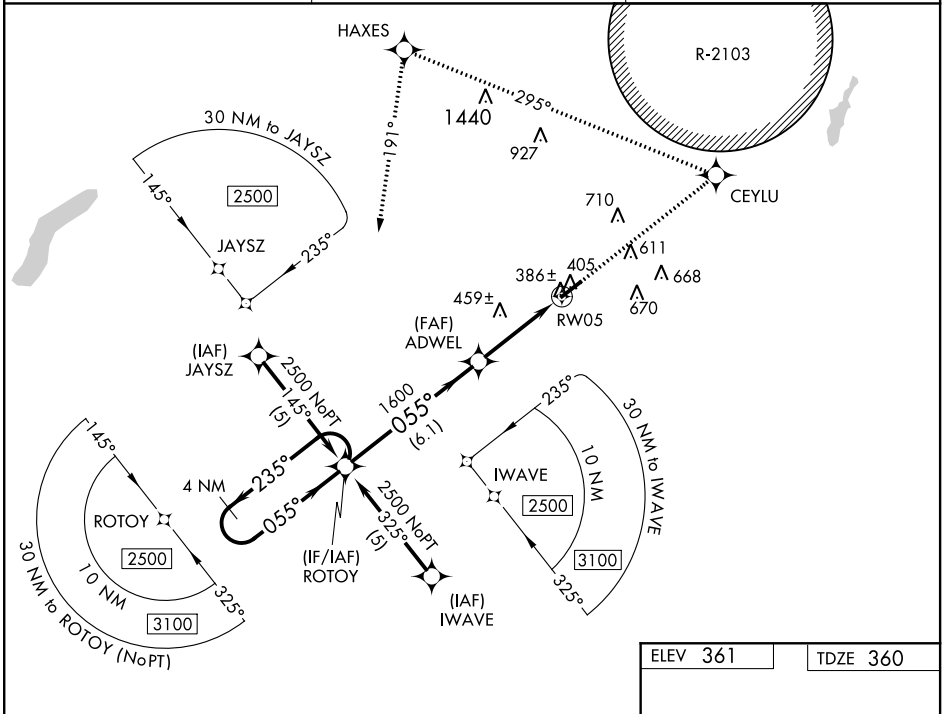
RNAV (GPS) RWY 5

ENTERPRISE MUNI (EDN)

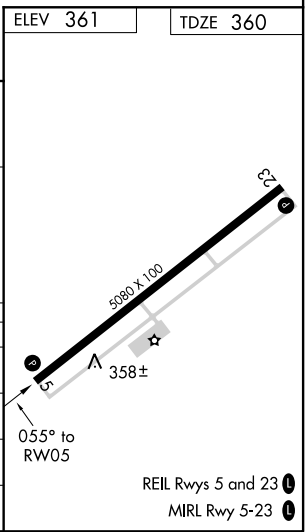
▼ Baro-VNAV NA. For uncompensated Baro-VNAV systems, LNAV/VNAV NA below -15°C (5°F) or above 54°C (130°F). DME/DME RNP-0.3 NA.
▲ NA Use Cairns AAF (Fort Rucker) altimeter setting.

MISSED APPROACH: Climb to 2500 direct CEYLU and left turn via track 295° to HAXES and left turn via track 191° to ROTOY and hold.

AWOS-3PT 118.9	CAIRNS APP CON★ 133.45 239.275	UNICOM 122.8(CTAF) 0
--------------------------	--	--------------------------------



CATEGORY	A	B	C	D
LPV DA	642-1 282 (300-1)			NA
LNAV/VNAV DA	688-1¼ 328 (400-1¼)			NA
LNAV MDA	760-1 400 (400-1)			NA
CIRCLING	860-1 499 (500-1)		860-1½ 499 (500-1½)	NA



SE-4, 16 AUG 2018 to 13 SEP 2018

SE-4, 16 AUG 2018 to 13 SEP 2018