

DUCHESNE, UTAH

AL-6405 (FAA)

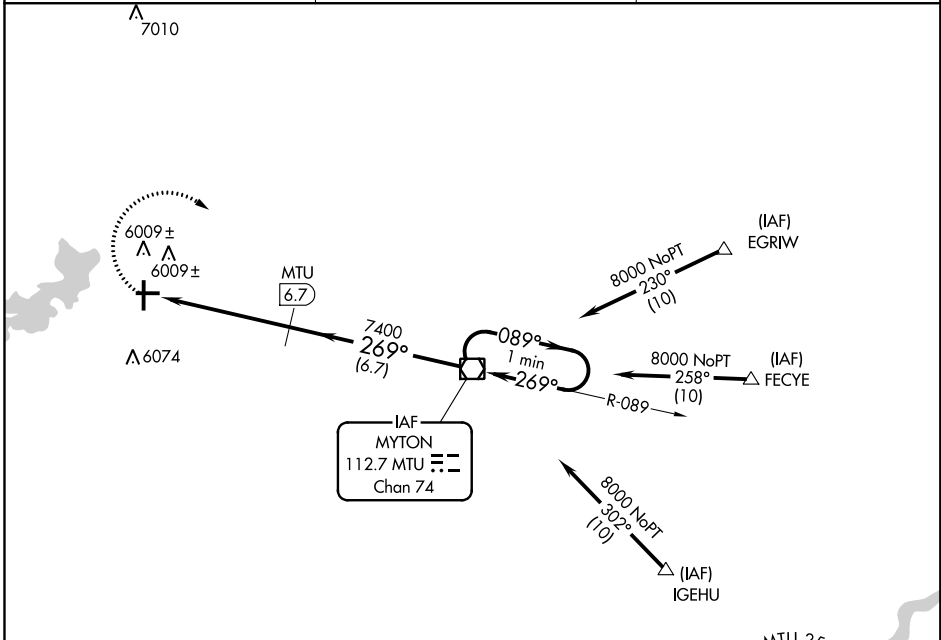
16147

VOR/DME MTU 112.7 Chan 74	APP CRS 269°	Rwy Idg TDZE Apt Elev N/A N/A 5826
---	------------------------	--

VOR/DME-A
DUCHESNE MUNI (U69)

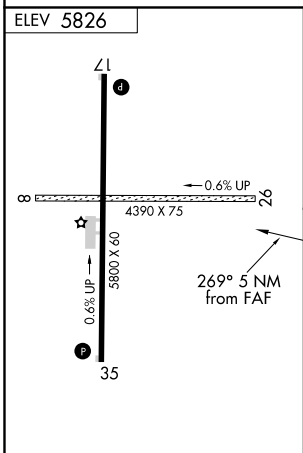
NA Use Vernal altimeter setting; when not received, procedure not authorized. MISSED APPROACH: Climbing right turn to 8000 direct MTU VOR/DME and hold.

VERNAL ASOS 135.175	CEDAR CITY RADIO 122.1R	UNICOM 122.8 (CTAF)
-------------------------------	-----------------------------------	-------------------------------

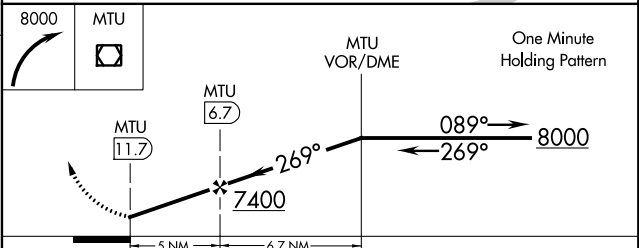
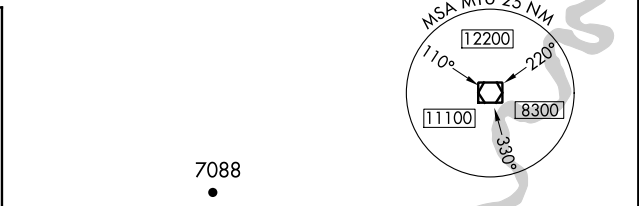


SW-4, 11 OCT 2018 to 08 NOV 2018

SW-4, 11 OCT 2018 to 08 NOV 2018



REIL Rwsy 17 and 35
MIRL Rwy 17-35



CATEGORY	A	B	C	D
CIRCLING	6660-1 834 (900-1)	6660-1¼ 834 (900-1¼)	6660-2½ 834 (900-2½)	NA

DUCHESNE, UTAH
Orig 17MAY01

40°12'N-110°23'W

DUCHESNE MUNI (U69)
VOR/DME-A