

CONWAY, SOUTH CAROLINA

AL-6274 (FAA)

17285

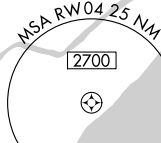
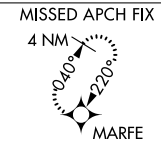
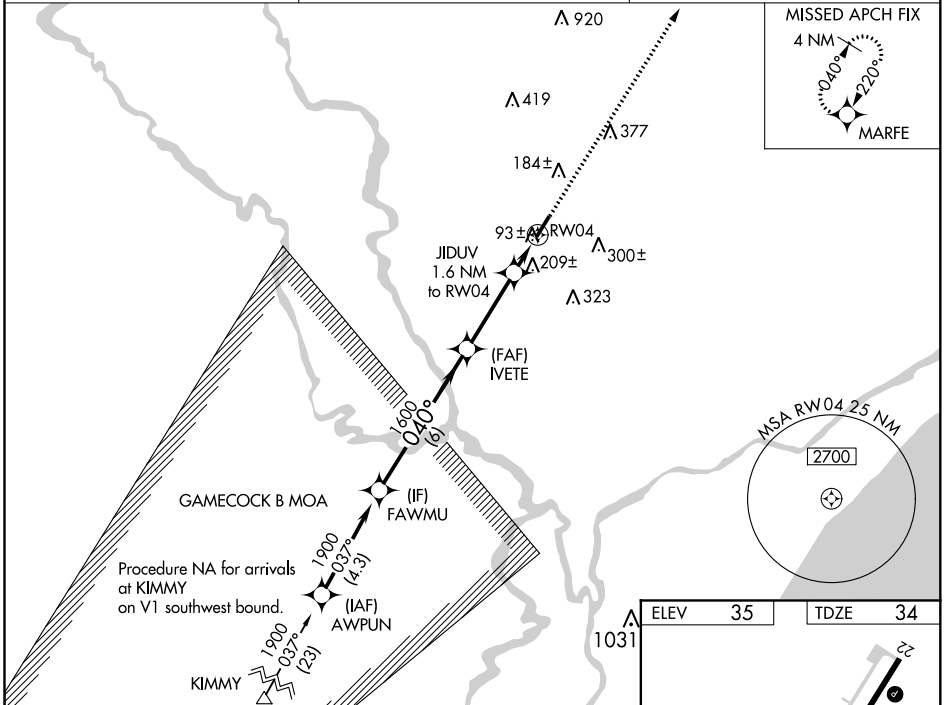
WAAS CH <b>56524</b> <b>W04A</b>	APP CRS <b>040°</b>	Rwy Idg <b>4401</b> TDZE <b>34</b> Apt Elev <b>35</b>
--	------------------------	---

**RNAV (GPS) RWY 4**  
CONWAY-HORRY COUNTY (HYW)

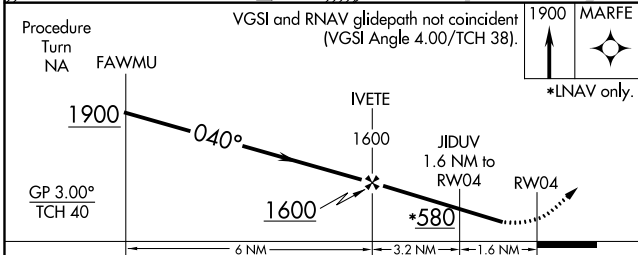
**⚠** Baro-VNAV NA when using Myrtle Beach altimeter setting. For uncompensated Baro-VNAV systems, LNAV/VNAV NA below -15°C (5°F) or above 43°C (109°F). DME/DME RNP-0.3 NA. Helicopter visibility reduction below 1 SM NA. When local altimeter setting not received, use Myrtle Beach altimeter setting and increase all DA 32 feet and all MDA 40 feet; increase LNAV/VNAV all Cats and LNAV Cats C and D visibility 1/8 mile. When VGSI inop, Straight-In minimums NA at night. When VGSI inop, Circling Rwy 22 NA at night.

**MISSED APPROACH:**  
Climb to 1900 direct MARFE and hold.

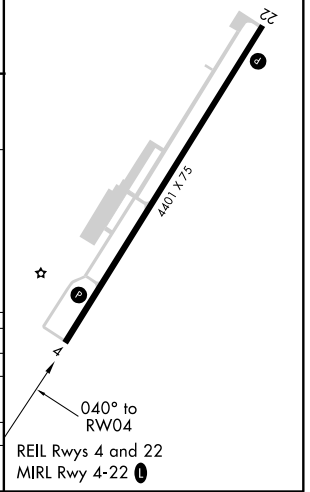
AWOS-3 <b>119.525</b>	MYRTLE BEACH APP CON★ <b>127.4 257.95</b>	UNICOM <b>122.7 (CTAF)</b> <b>📶</b>
--------------------------	--	--



ELEV 35	TDZE 34
---------	---------



CATEGORY	A	B	C	D
LPV DA	315-1		281 (300-1)	
LNAV/DA/VNAV	525-1 3/4		491 (500-1 3/4)	
LNAV MDA	460-1	426 (500-1)	460-1 1/4	426 (500-1 1/4)
CIRCLING	520-1	485 (500-1)	485 (500-1 1/2)	600-2 565 (600-2)



CONWAY, SOUTH CAROLINA  
Amdt 1A 11DEC14

33°50'N-79°07'W

CONWAY-HORRY COUNTY (HYW)  
**RNAV (GPS) RWY 4**

SE-2: 16 AUG 2018 to 13 SEP 2018

SE-2: 16 AUG 2018 to 13 SEP 2018