

CONWAY, SOUTH CAROLINA

AL-6274 (FAA)

17285

| | | |
|--|------------------------|---|
| WAAS CH 90424 W22A | APP CRS 220° | Rwy Idg TDZE 35 Apt Elev 35 |
|--|------------------------|---|

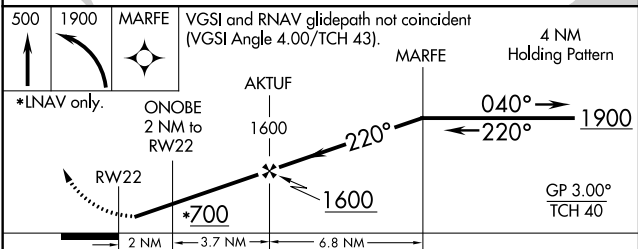
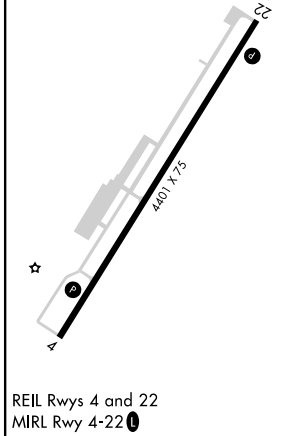
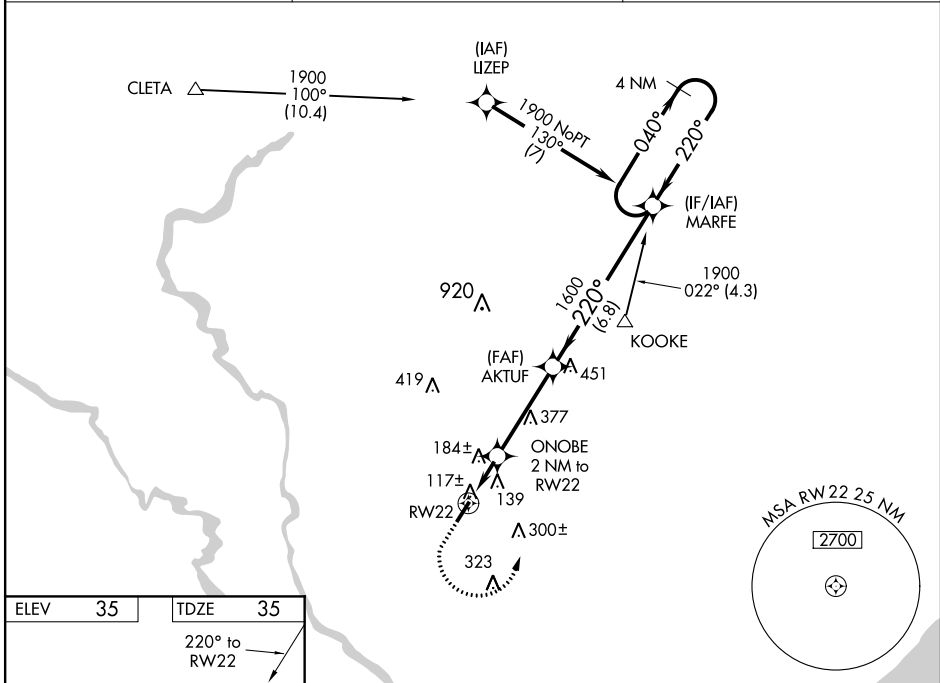
RNAV (GPS) RWY 22

CONWAY-HORRY COUNTY (HYW)

▼ For uncompensated Baro-VNAV systems, LNAV/VNAV NA below -1.5°C (5°F) or above 43°C (109°F). DME/DME RNP-0.3 NA. Helicopter visibility reduction below 1 SM NA. When local altimeter setting not received, use Myrtle Beach altimeter setting and increase all DA 32 feet and all MDA 40 feet; increase LNAV/VNAV all Cats visibility 1/8 mile and LNAV Cats C and D visibility 1/4 mile. Baro-VNAV NA when using Myrtle Beach altimeter setting. When VGSi inop, Straight-in/Circling Rwy 22 procedure NA at night.

MISSED APPROACH: Climb to 500 then climbing left turn to 1900 direct MARFE and hold.

| | | |
|--------------------------|--|---------------------------------|
| AWOS-3 119.525 | MYRTLE BEACH APP CON* 127.4 257.95 | UNICOM 122.7 (CTAF) 0 |
|--------------------------|--|---------------------------------|



| | | | | |
|--------------|---------------------------|-------------|-----------------|-----------------|
| CATEGORY | A | B | C | D |
| LPV DA | 285-1 250 (300-1) | | | |
| LNAV/VNAV DA | 438-1 3/8 403 (500-1 3/8) | | | |
| LNAV MDA | 440-1 | 405 (500-1) | 440-1 1/8 | 405 (500-1 1/8) |
| CIRCLING | 520-1 | 485 (500-1) | 520-1 1/2 | 600-2 |
| | | | 485 (500-1 1/2) | 565 (600-2) |

CONWAY, SOUTH CAROLINA
Amdt 1A 11DEC14

33°50'N-79°07'W

CONWAY-HORRY COUNTY (HYW) RNAV (GPS) RWY 22

SE-2. 16 AUG 2018 to 13 SEP 2018

SE-2. 16 AUG 2018 to 13 SEP 2018

REIL Rws 4 and 22
MIRL Rwy 4-22 0