

MOUNT STERLING, KENTUCKY

AL-6224 (FAA)

18088

NDB IOB 210	APP CRS 020°	Rwy Idg 5000
		TDZE 1019
		Apt Elev 1019

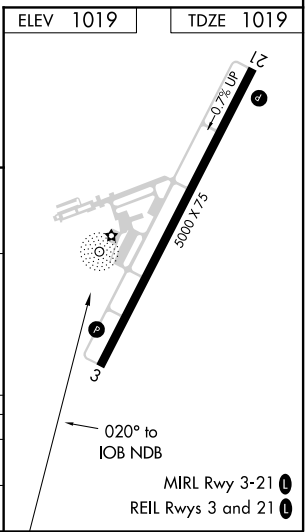
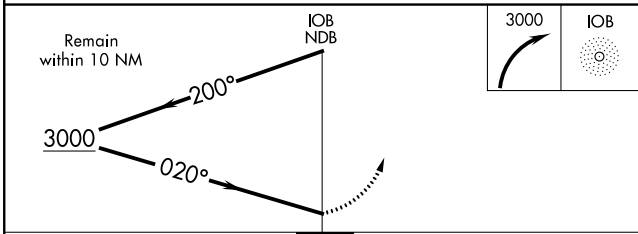
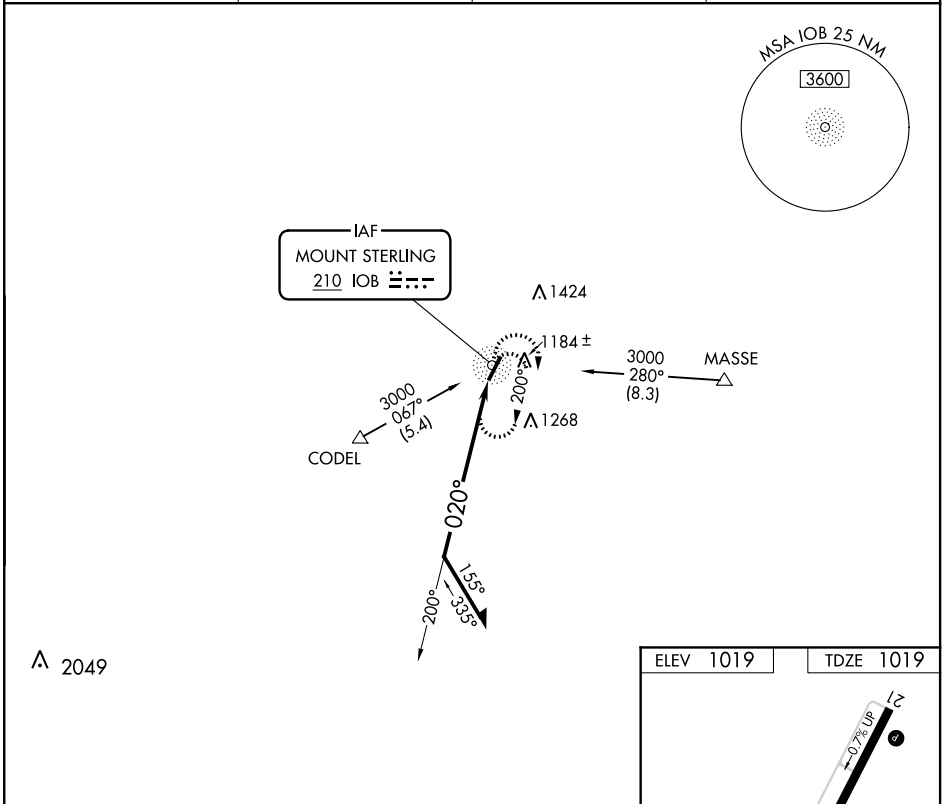
NDB RWY 3

MOUNT STERLING-MONTGOMERY COUNTY (IOB)

⚠ NA When local altimeter setting not received, use Lexington altimeter setting and increase all MDA 80 feet and increase all visibilities ½ mile. Helicopter visibility reduction below ¾ SM NA.

MISSED APPROACH: Climbing right turn to 3000 in IOB NDB holding pattern.

AWOS-3 120.675	LEXINGTON APP CON 120.15 259.3	GCO 121.72	UNICOM 122.8 (CTAF) 0
--------------------------	--	----------------------	---------------------------------



CATEGORY	A	B	C	D
S-3	1720-1	701 (800-1)	1720-2	701 (800-2)
C CIRCLING	1720-1	701 (800-1)	1740-2 721 (800-2)	1740-2¼ 721 (800-2¼)

MOUNT STERLING, KENTUCKY
Amdt 2B 28MAY15

MOUNT STERLING-MONTGOMERY COUNTY (IOB)
38°03'N-83°59'W

NDB RWY 3

SE-1, 24 MAY 2018 to 21 JUN 2018

SE-1, 24 MAY 2018 to 21 JUN 2018

MIRL Rwy 3-21 0
REIL Rws 3 and 21 0