

MOUNT STERLING, KENTUCKY

AL-6224 (FAA)

14205

NDB IOB 210	APP CRS 217°	Rwy Idg 5000
		TDZE 1007
		Apt Elev 1019

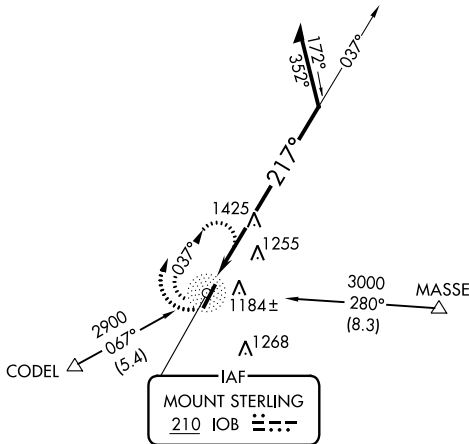
NDB RWY 21

MOUNT STERLING-MONTGOMERY COUNTY (IOB)

⚠ When local altimeter setting not received, use Lexington altimeter setting and increase all MDA 80 feet and increase all visibilities ¼ mile.
⚠ NA Helicopter visibility reduction below ¼ SM NA.

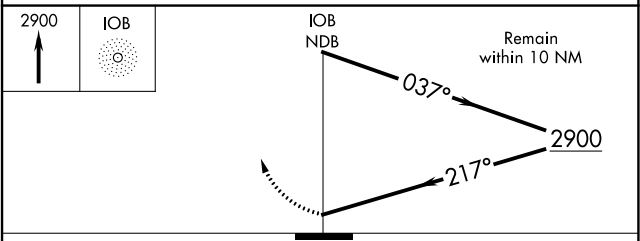
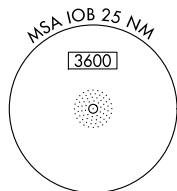
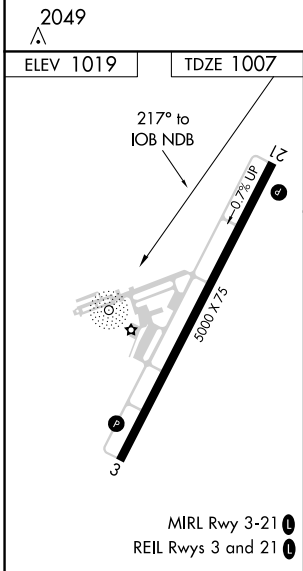
MISSED APPROACH: Climb to 2900 in IOB NDB holding pattern.

AWOS-3 120.675	LEXINGTON APP CON 120.15 259.3	GCO 121.72	UNICOM 122.8 (CTAF) 0
--------------------------	--	----------------------	---------------------------------



SE-1, 14 SEP 2017 to 12 OCT 2017

SE-1, 14 SEP 2017 to 12 OCT 2017



CATEGORY	A	B	C	D
S-21	1780-1 773 (800-1)	1780-1¼ 773 (800-1¼)	1780-2½	773 (800-2½)
C CIRCLING	1780-1 761 (800-1)	1780-1¼ 761 (800-1¼)	1780-2½	761 (800-2½)

MOUNT STERLING, KENTUCKY
Amdt 2B 24JUL14

MOUNT STERLING-MONTGOMERY COUNTY (IOB)
38°03'N-83°59'W

NDB RWY 21