

HAMILTON, NEW YORK

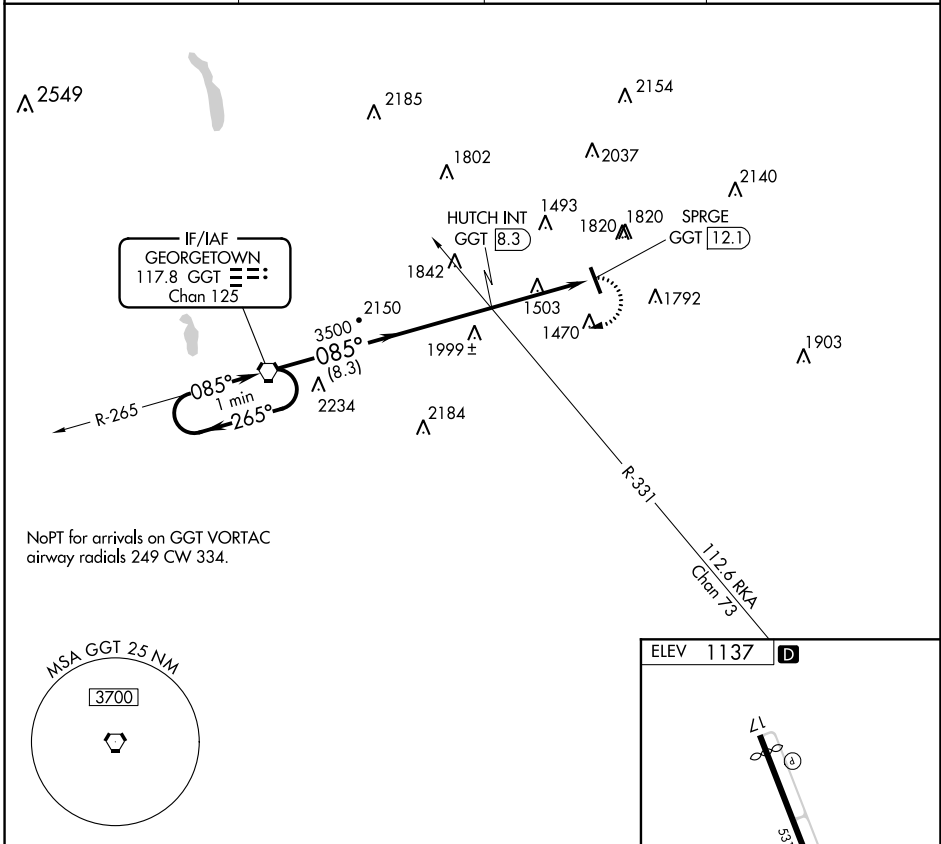
AL-5788 (FAA)

18032

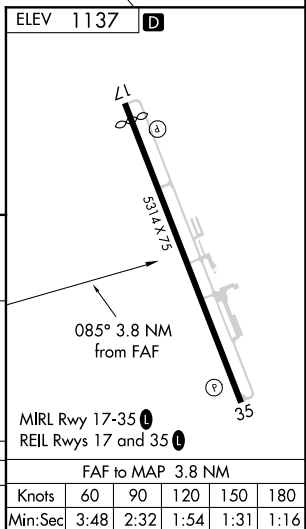
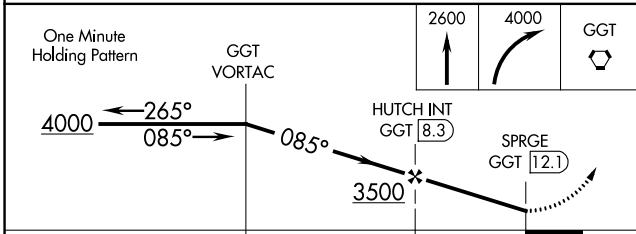
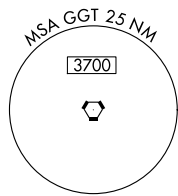
VORTAC GGT 117.8 Chan 125	APP CRS 085°	Rwy Idg TDZE Apt Elev N/A N/A 1137
---	------------------------	--

VOR-A
HAMILTON MUNI (VGC)

<p>▽ Helicopter visibility reduction below 3/4 SM NA. △ NA When local altimeter setting not received; use Syracuse altimeter setting and increase all MDA 180 feet.</p>	<p>MISSED APPROACH: Climb to 2600 then climbing right turn to 4000 direct GGT VORTAC and hold.</p>		
<p>AWOS-3P 119.425</p>	<p>SYRACUSE APP CON 126.125 269.125</p>	<p>UNICOM 123.0 (CTAF)</p>	<p>122.7</p>



NoPT for arrivals on GGT VORTAC airway radials 249 CW 334.



CATEGORY	A	B	C	D	FAF to MAP 3.8 NM					
CIRCLING	2260-1 1/4 1123 (1200-1 1/4)	2260-1 1/2 1123 (1200-1 1/2)	2260-3 1123 (1200-3)	NA	Knots	60	90	120	150	180
					Min:Sec	3:48	2:32	1:54	1:31	1:16

HAMILTON, NEW YORK
Amdt 4A 30APR15

42°51'N-75°34'W

HAMILTON MUNI (VGC)
VOR-A

NE-2: 01 FEB 2018 to 01 MAR 2018

NE-2: 01 FEB 2018 to 01 MAR 2018