

HAMILTON, NEW YORK

AL-5788 (FAA)

18032

WAAS CH 70518 W35A	APP CRS 350°	Rwy Idg TDZE 1135 Apt Elev 1137
--	------------------------	---

RNAV (GPS) RWY 35

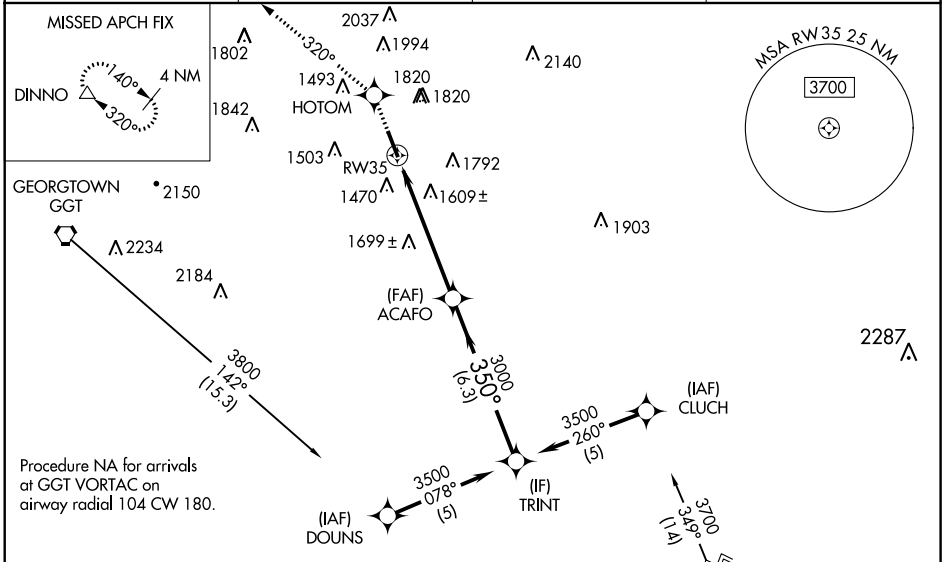
HAMILTON MUNI (VGC)

▼ Baro-VNAV NA when using Syracuse altimeter setting. For uncompensated Baro-VNAV systems, LNAV/VNAV NA below -17°C (2°F) or above 54°C (130°F). DME/DME RNP-0.3 NA.

▲ NA Helicopter visibility reduction below ¼ SM NA. When local altimeter setting not received; use Syracuse altimeter setting and increase LPV DA to 1640, increase LNAV/VNAV DA to 2281 and all MDA 180 feet. Increase LPV visibility all Cats ¼ mile, LNAV Cats A and B ¼ mile, Cat C ½ mile and Circling Cat B visibility ¼ mile.

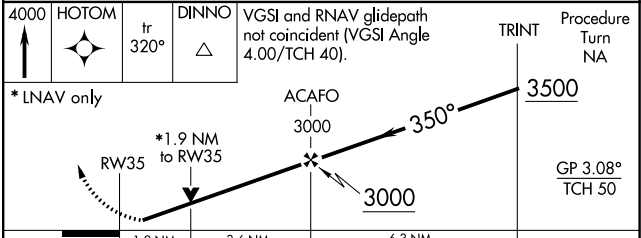
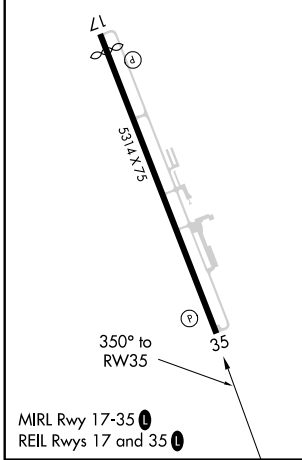
MISSED APPROACH: Climb to 4000 direct HOTOM and on track 320° to DINNO and hold, continue climb-in-hold to 4000.

AWOS-3P 119.425	SYRACUSE APP CON 126.125 269.125	UNICOM 123.0 (CTAF)	122.7 Ⓢ
---------------------------	--	-------------------------------	-----------------------



ELEV 1137	D	TDZE 1135
-----------	----------	-----------

Procedure NA for arrivals at RKA VOR/DME on V433-483 southeast bound.



CATEGORY	A	B	C	D
LPV DA	1392-1 257 (300-1)			NA
LNAV/VNAV DA	2114-4 979 (1000-4)			NA
LNAV MDA	1960-1 825 (900-1)	1960-1¼ 825 (900-1¼)	1960-2½ 825 (900-2½)	NA
CIRCLING	2040-1¼	903 (1000-1¼)	2120-3 983 (1000-3)	NA

HAMILTON, NEW YORK
Orig-B 30APR15

42°51'N - 75°34'W

RNAV (GPS) RWY 35

NE-2. 01 FEB 2018 to 01 MAR 2018

NE-2. 01 FEB 2018 to 01 MAR 2018