

PARAGOULD, ARKANSAS

AL-5544 (FAA)

15064

VOR/DME JBR	APP CRS	Rwy Idg	4011
108.6	019°	TDZE	290
Chan 23		Apt Elev	290

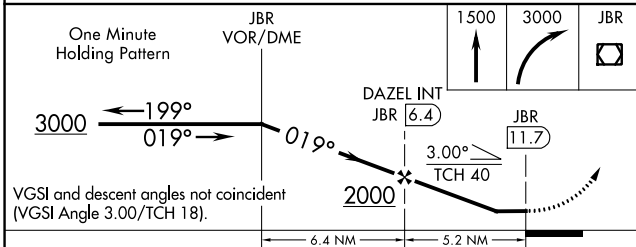
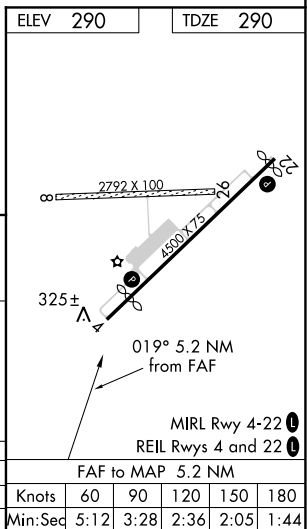
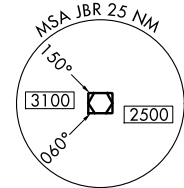
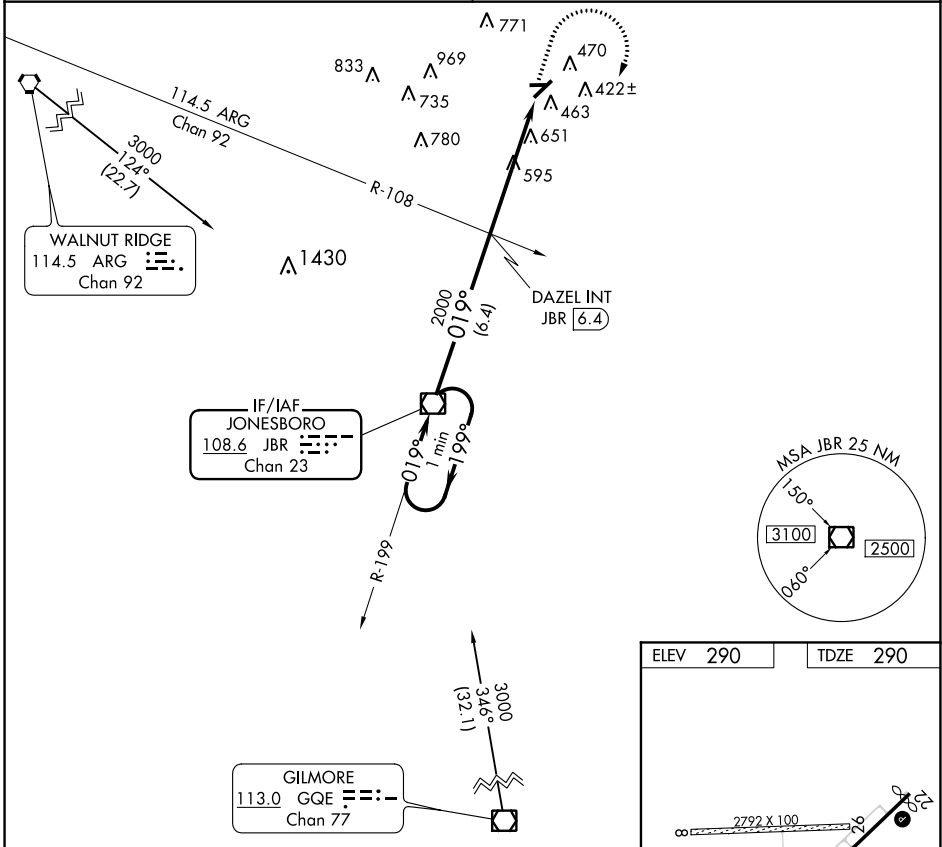
VOR RWY 4

KIRK FIELD (PGR)

▼ Helicopter visibility reduction below 1 SM NA. Procedure NA at night. Use Jonesboro altimeter setting; when not received, use Walnut Ridge altimeter setting and increase all MDA 20 feet.

▲ NA MISSED APPROACH: Climb to 1500 then climbing right turn to 3000 direct JBR VOR/DME and hold.

MEMPHIS CENTER 120.075 289.4	UNICOM 122.8 (CTAF)
--	-------------------------------



CATEGORY	A	B	C	D	FAF to MAP 5.2 NM
S-4	980-1	690 (700-1)		NA	Knots 60 90 120 150 180
CIRCLING	980-1	690 (700-1)		NA	Min:Sec 5:12 3:28 2:36 2:05 1:44

PARAGOULD, ARKANSAS
Amdt 5A 05MAR15

36°04'N-90°31'W

VOR RWY 4

SC-1, 14 SEP 2017 to 12 OCT 2017

SC-1, 14 SEP 2017 to 12 OCT 2017