

PARAGOULD, ARKANSAS

AL-5544 (FAA)

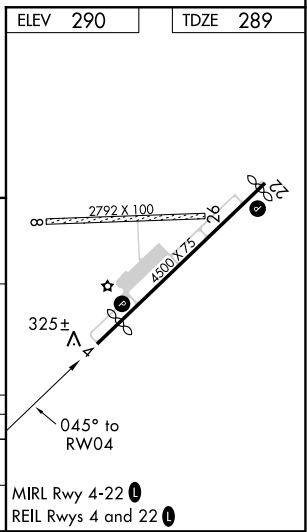
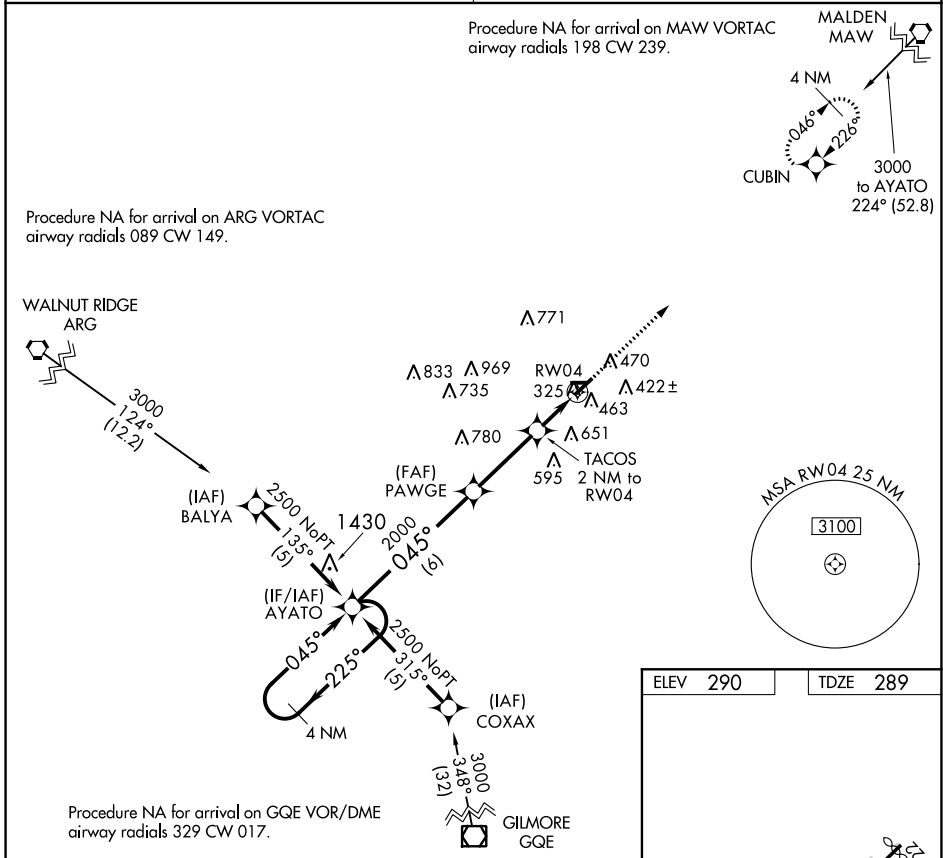
15064

APP CRS	Rwy Idg	<b>4011</b>
<b>045°</b>	TDZE	<b>289</b>
	Apt Elev	<b>290</b>

# RNAV (GPS) RWY 4

KIRK FIELD (PGR)

<p><b>▼</b> Use Jonesboro altimeter setting.</p> <p><b>▲</b> NA GPS or RNP-0.3 required. DME/DME RNP-0.3 NA.</p>	<p>MISSED APPROACH: Climb to 3000 direct CUBIN WP and hold.</p>
<p>MEMPHIS CENTER</p> <p><b>120.075 289.4</b></p>	<p>UNICOM</p> <p><b>122.8 (CTAF) 0</b></p>



4 NM Holding Pattern	AYATO	PAWGE	TACOS 2 NM to RW04	3000	CUBIN
2500	← 225°	045° →	045°	3.06° TCH 40	RW04
VGS1 and descent angles not coincident (VGS1 Angle 3.00/TCH 18).		2000	920		
	6 NM	3.2 NM	2 NM		
CATEGORY	A	B	C	D	
RNAV MDA	800-1¼	511 (600-1¼)		NA	
CIRCLING	860-1¼	570 (600-1¼)		NA	

PARAGOULD, ARKANSAS  
Orig-A 25NOV04

36°04'N-90°31'W

# RNAV (GPS) RWY 4

KIRK FIELD (PGR)

SC-1, 24 MAY 2018 to 21 JUN 2018

SC-1, 24 MAY 2018 to 21 JUN 2018