

(SNDOA3.SNDOA) 16315

SL-5369 (FAA)

SHENANDOAH VALLEY RGNL (SHD)

# SHENANDOAH THREE DEPARTURE

STAUNTON/WAYNESBORO/HARRISONBURG, VIRGINIA

AWOS-3  
124.925  
CTAF  
123.0  
CLNC  
118.35  
POTOMAC DEP CON  
132.85 323.125

**TOP ALTITUDE:  
6000**

TAKEOFF MINIMUMS:

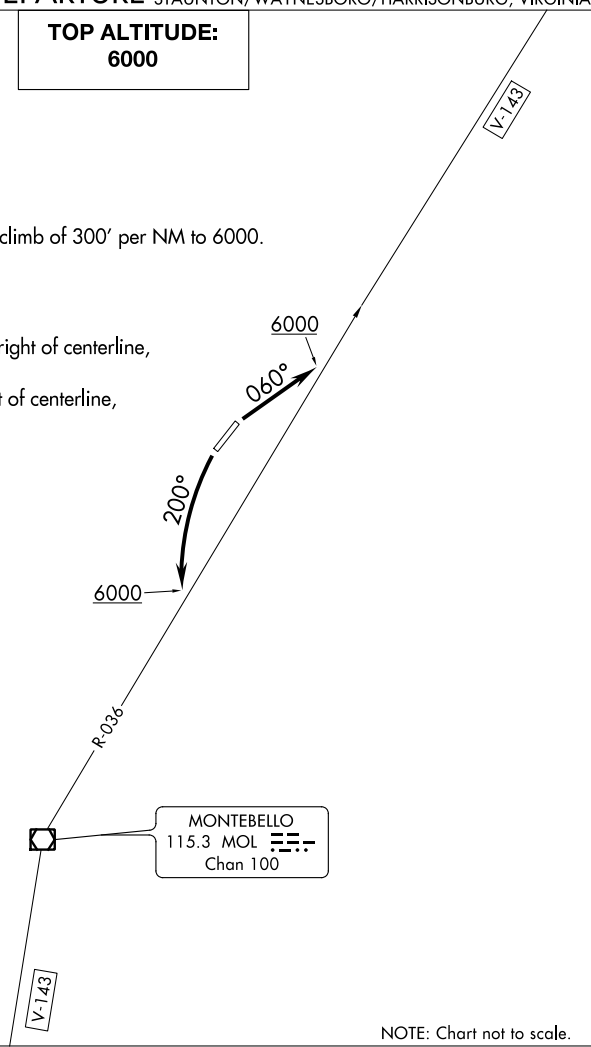
Rwys 5, 23: Standard with minimum climb of 300' per NM to 6000.

TAKEOFF OBSTACLE NOTES:

Rwy 5: Trees 1720' from DER, 635' right of centerline, up to 100' AGL/1279' MSL.

Rwy 23: Tree 679' from DER, 616' left of centerline, 35' AGL/1194' MSL.

NOTE: RADAR required.



NOTE: Chart not to scale.



## DEPARTURE ROUTE DESCRIPTION

TAKEOFF RUNWAY 5: Climb heading 060° to 6000 to intercept MOL VOR/DME R-036 outbound, thence....

TAKEOFF RUNWAY 23: Climbing left turn to 6000 heading 200° to intercept MOL VOR/DME R-036 inbound, thence....

....expect radar vectors to filed/assigned route. Expect clearance to filed altitude/flight level 10 minutes after departure.

SHENANDOAH THREE DEPARTURE STAUNTON/WAYNESBORO/HARRISONBURG, VIRGINIA

(SNDOA3.SNDOA) 10NOV16

SHENANDOAH VALLEY RGNL (SHD)

NE-3: 17 AUG 2017 to 14 SEP 2017

NE-3: 17 AUG 2017 to 14 SEP 2017