

STAUNTON-WAYNESBORO-HARRISONBURG, VIRGINIA

15344

LOM SH 375	APP CRS 047°	Rwy Idg 6002	TDZE 1184
		Apt Elev 1201	

AL-5369 (FAA)

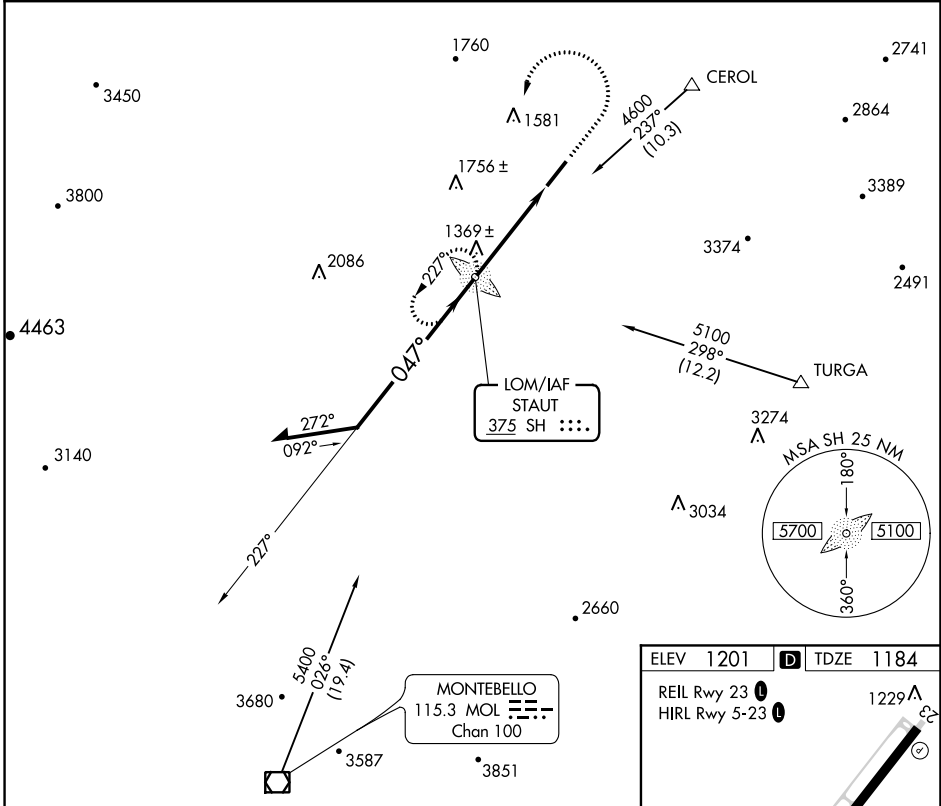
NDB RWY 5

SHENANDOAH VALLEY RGNL (SHD)

When local altimeter setting not received, use Charlottesville altimeter setting: increase all MDAs 140 feet and visibility S-5 and Circling Cat C/D ½ mile.

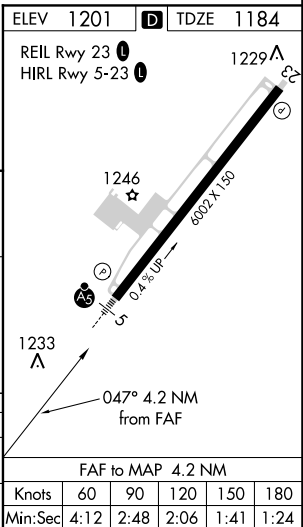
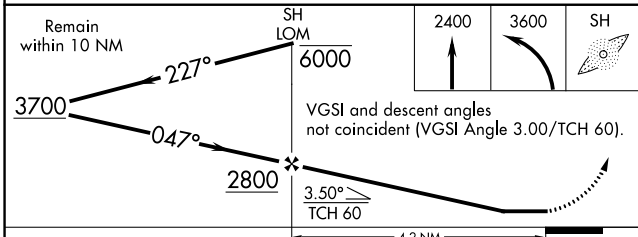
MALSR MISSED APPROACH: Climb to 2400 then climbing left turn to 3600 direct SH LOM and hold.

AWOS-3 124.925	POTOMAC APP CON 132.85 323.125	CLNC DEL 118.35	UNICOM 123.0 (CTAF) 0
--------------------------	--	---------------------------	---------------------------------



NE-3, 22 JUN 2017 to 20 JUL 2017

NE-3, 22 JUN 2017 to 20 JUL 2017



CATEGORY	A	B	C	D
S-5	1760-¾ 576 (600-¾)		1760-1 576 (600-1)	1760-1½ 576 (600-1½)
CIRCLING	1760-1 559 (600-1)		1760-1½ 559 (600-1½)	1820-2 619 (700-2)

STAUNTON-WAYNESBORO-HARRISONBURG, VIRGINIA

SHENANDOAH VALLEY RGNL (SHD)

Amdt 10 27AUG09

38°16'N-78°54'W

NDB RWY 5