

STAUNTON-WAYNESBORO-HARRISONBURG, VIRGINIA

18032

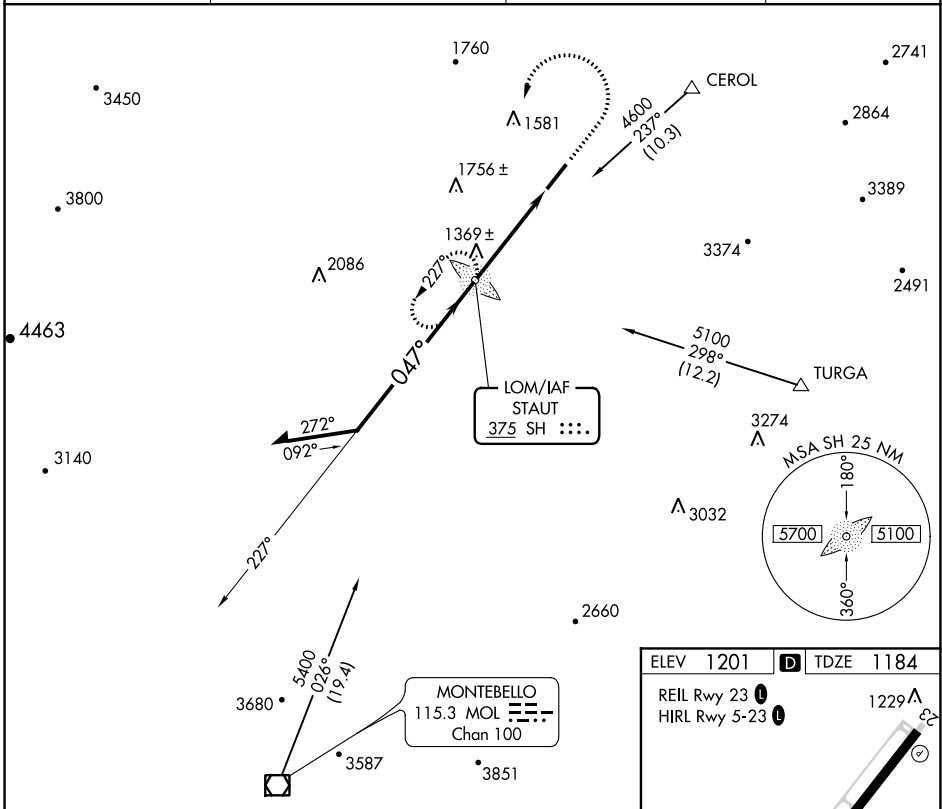
LOM SH <b>375</b>	APP CRS <b>047°</b>	Rwy Idg <b>6002</b>
		TDZE <b>1184</b>
		Apt Elev <b>1201</b>

AL-5369 (FAA)

# NDB RWY 5

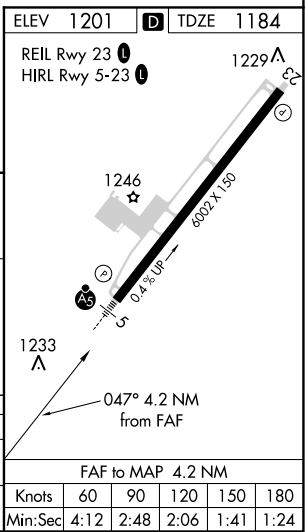
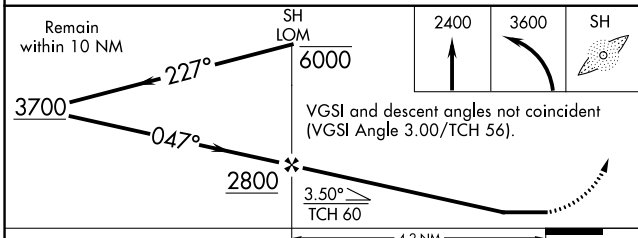
SHENANDOAH VALLEY RGNL (SHD)

<p>When local altimeter setting not received, use Charlottesville altimeter setting: increase all MDAs 140 feet and visibility S-5 and Circling Cat C/D ½ mile.</p>	MALSR	MISSED APPROACH: Climb to 2400 then climbing left turn to 3600 direct SH LOM and hold.	
AWOS-3 <b>124.925</b>	POTOMAC APP CON <b>132.85 323.125</b>	CLNC DEL <b>118.35</b>	UNICOM <b>123.0 (CTAF) 0</b>



NE-3, 24 MAY 2018 to 21 JUN 2018

NE-3, 24 MAY 2018 to 21 JUN 2018



CATEGORY	A	B	C	D
S-5	1760-¾ 576 (600-¾)		1760-1 576 (600-1)	1760-1½ 576 (600-1½)
CIRCLING	1760-1 559 (600-1)		1760-1½ 559 (600-1½)	1820-2 619 (700-2)

STAUNTON-WAYNESBORO-HARRISONBURG, VIRGINIA

SHENANDOAH VALLEY RGNL (SHD)

Amdt 10 27AUG09

38°16'N-78°54'W

# NDB RWY 5