

LOC I-SHD 109.5	APP CRS 047°	Rwy Idg 6002	TDZE 1184
		Apt Elev 1201	

AL-5369 (FAA)

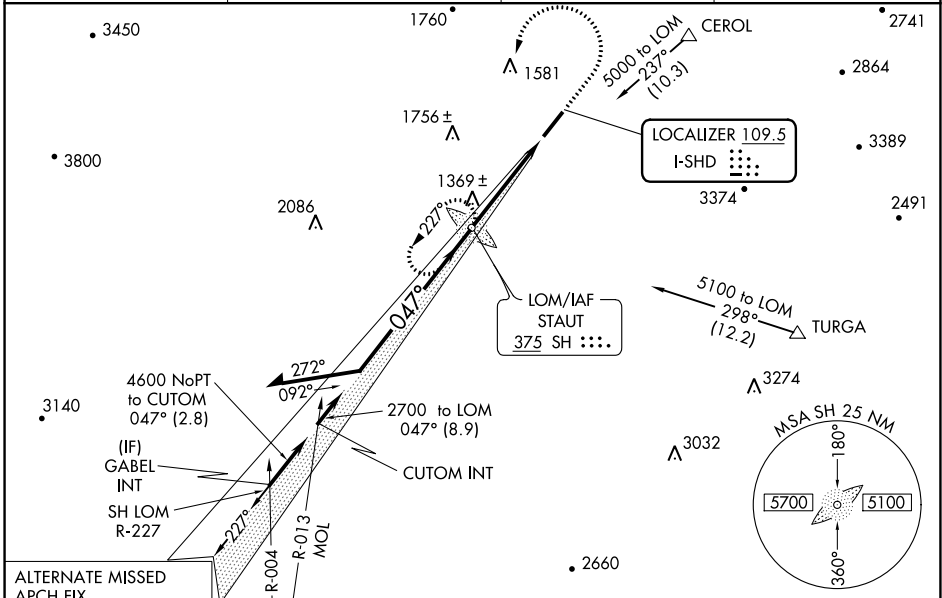
ILS or LOC RWY 5

SHENANDOAH VALLEY RGNL (SHD)

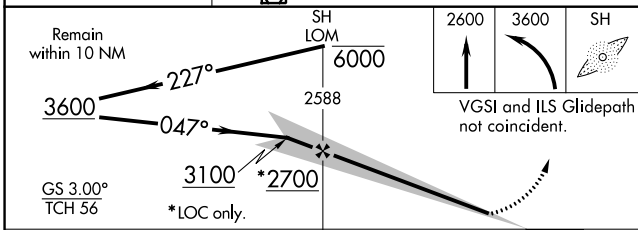
ADF Required. Autopilot coupled approach NA below 1494 feet. When local altimeter setting not received, use Charlottesville altimeter setting and increase all DA 130 feet, all MDA 140 feet. Increase ILS visibility ¼ mile all Cats, LOC visibility Cat C/D ½ mile and Circling Cat D ½ mile. For inoperative MALSRS when using Charlottesville altimeter setting, increase ILS visibility to 1¼ miles.

MALSRS MISSED APPROACH: Climb to 2600 then climbing left turn to 3600 direct SH LOM and hold.

AWOS-3 124.925	POTOMAC APP CON 132.85 323.125	CLNC DEL 118.35	UNICOM 123.0 (CTAF)
--------------------------	--	---------------------------	-------------------------------

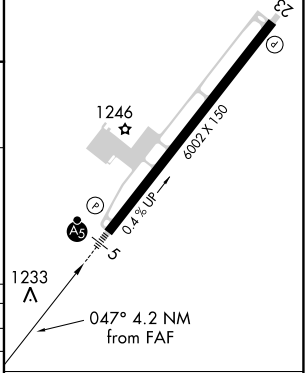


ALTERNATE MISSED APCH FIX
MONTEBELLO
 MOL 115.3 Chan 100
 R-271 -091°



ELEV 1201	TDZE 1184
-----------	-----------

REIL Rwy 23
 HIRL Rwy 5-23



CATEGORY	A	B	C	D
S-ILS 5		1384-½	200 (200-½)	
S-LOC 5	1620-½	436 (500-½)	1620-¾ 436 (500-¾)	1620-1 436 (500-1)
CIRCLING	1620-1 419 (500-1)	1660-1 459 (500-1)	1660-1½ 459 (500-1½)	1820-2 619 (700-2)

FAF to MAP 4.2 NM					
Knots	60	90	120	150	180
Min:Sec	4:12	2:48	2:06	1:41	1:24

NE-3, 01 FEB 2018 to 01 MAR 2018

NE-3, 01 FEB 2018 to 01 MAR 2018