

LANCASTER, PENNSYLVANIA

AL-927 (FAA)

17285

| | | | |
|--|------------------------|-----------------------------|---|
| WAAS CH 42723 W13A | APP CRS 128° | Rwy Idg TDZE Apt Elev | 4102 402 403 |
|--|------------------------|-----------------------------|---|

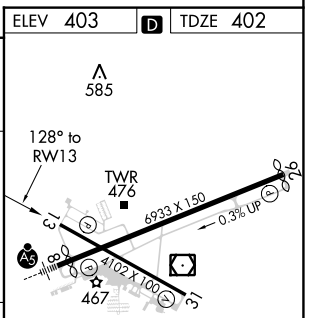
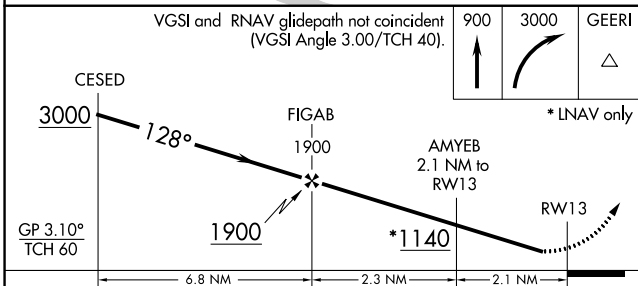
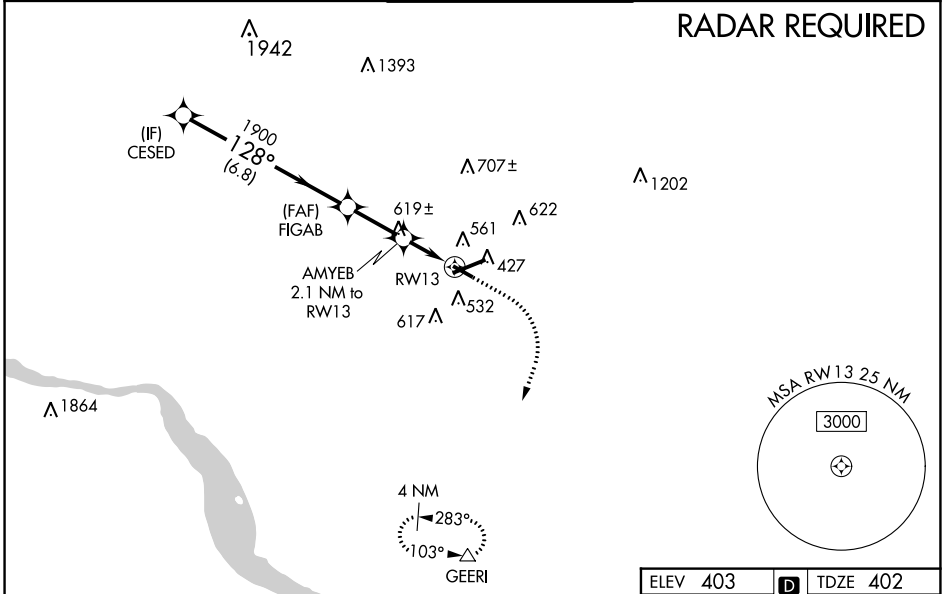
RNAV (GPS) RWY 13

LANCASTER (LNS)

⚠ Night landing: Rwy 13, 31 NA. Baro-VNAV NA when using Harrisburg Intl altimeter setting. For uncompensated Baro-VNAV systems, LNAV/VNAV NA below -15°C (5°F) or above 31°C (87°F). DME/DME RNP-0.3 NA. Helicopter visibility reduction below 1 SM NA. When local altimeter setting not received, use Harrisburg Intl altimeter setting and increase all DA 64 feet and all MDA 80 feet, increase LPV and LNAV/VNAV visibility all Cats 1/8, and LNAV and Circling Cats C and D 1/4.

MISSED APPROACH:
Climb to 900 then climbing right turn to 3000 direct GEERI and hold

| | | | | |
|------------------------|---|---|-------------------------|-------------------------|
| ATIS 125.675 | HARRISBURG APP CON 126.45 281.525 | LANCASTER TOWER * 120.9 (CTAF) 251.1 | GND CON 121.8 | UNICOM 122.95 |
|------------------------|---|---|-------------------------|-------------------------|



| CATEGORY | A | B | C | D |
|--------------|-------|-------------|-----------------|-----------------|
| LPV DA | | 687-1 | 285 (300-1) | |
| LNAV/VNAV DA | | 894-1 1/8 | 492 (500-1 1/8) | |
| LNAV MDA | 880-1 | 478 (500-1) | 880-1 3/8 | 478 (500-1 3/8) |
| CIRCLING | 940-1 | 537 (600-1) | 940-1 1/2 | 1060-2 |
| | | | 537 (600-1 1/2) | 657 (700-2) |

REIL Rwy 31 **①**
HIRL Rwy 8-26 **①**
MIRL Rwy 13-31 **①**

LANCASTER, PENNSYLVANIA
Amdt 1A 25JUN15

40°07'N-76°18'W

LANCASTER (LNS) RNAV (GPS) RWY 13

NE-4, 01 FEB 2018 to 01 MAR 2018

NE-4, 01 FEB 2018 to 01 MAR 2018