

NEW YORK, NEW YORK

AL-610 (FAA)

21168

APP CRS	Rwy ldg	9093
043°	TDZE	13
	Apt Elev	13

RNAV (GPS) Z RWY 13L

JOHN F KENNEDY INTL (JFK)

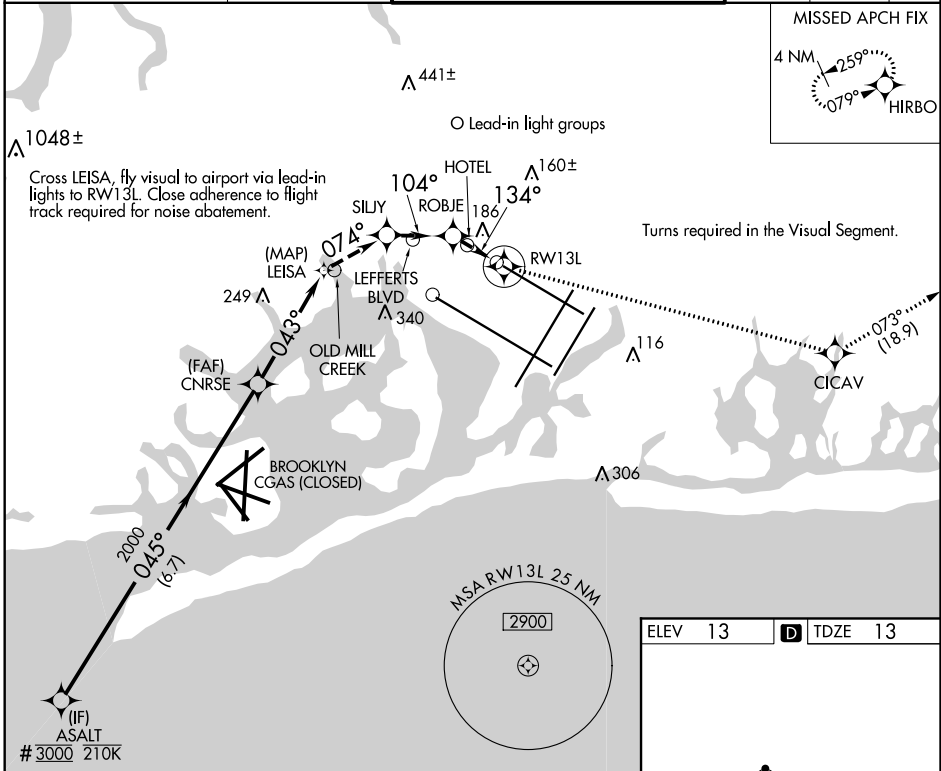
RNP APCH - GPS. RADAR required.

⚠ For any inop lead-in light bank out of service, increase visibility to 4 SM.

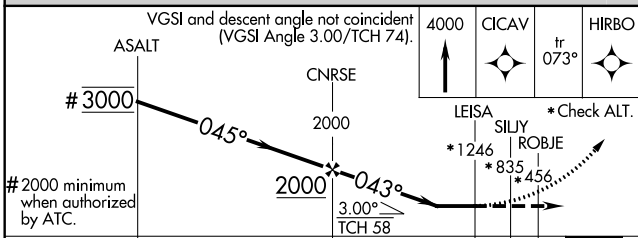


MISSED APPROACH: (Do not exceed 210K until CICA). Climb to 4000 on FMS lateral path to RW13L, then direct CICA and track 073° to HIRBO and hold. If unable to follow the FMS lateral path, turn to heading 100°, then climb to 4000 direct CICA and track 073° to HIRBO and hold.

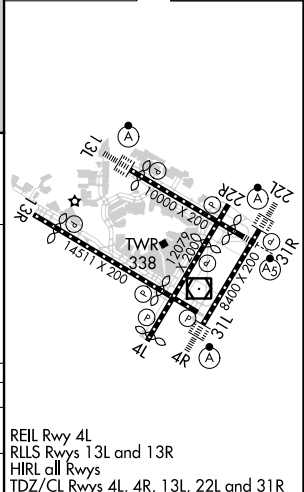
D-ATIS (ARR/DEP) (ARR-NE) (ARR-SW)	NEW YORK APP CON	KENNEDY TOWER	GND CON	CLNC DEL	CPDLC
128.725 117.7 115.4	128.125 269.0	Rwys 4R/22L and 13L/31R 119.1 281.55 Rwys 4L/22R and 13R/31L 123.9 281.55	121.9 348.6	135.05 348.6	



ELEV 13	D TDZE 13
---------	------------------



CATEGORY	A	B	C	D
RNAV MDA	1260-2		1247 (1300-2)	
CIRCLING	NA			



NEW YORK, NEW YORK
Orig-B 17JUN21

40°38'N-73°47'W

RNAV (GPS) Z RWY 13L

NE-2, 09 SEP 2021 to 07 OCT 2021

NE-2, 09 SEP 2021 to 07 OCT 2021