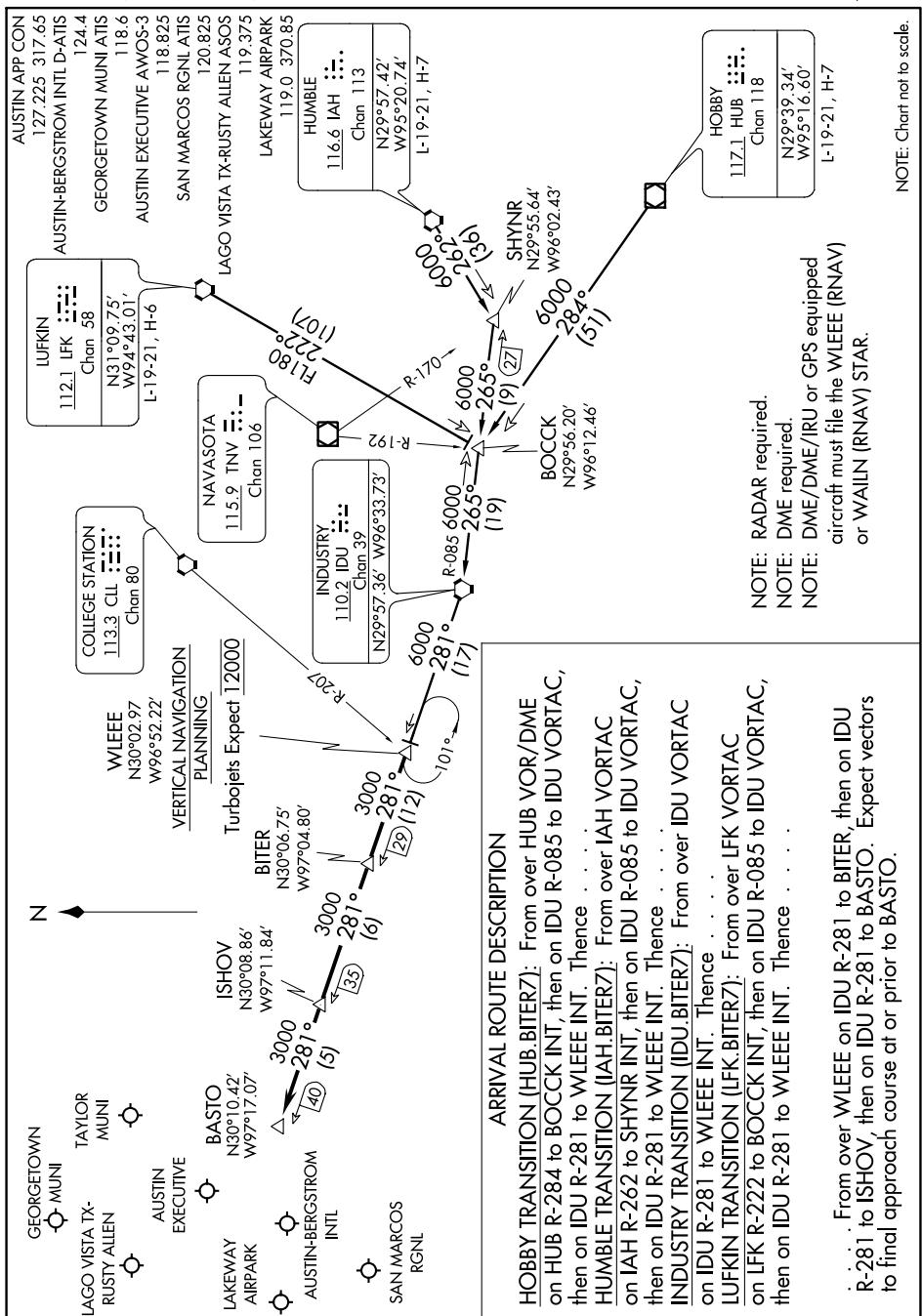


# BITER SEVEN ARRIVAL

AUSTIN, TEXAS

SC-3, 01 FEB 2018 to 01 MAR 2018



### ARRIVAL ROUTE DESCRIPTION

**HUBBY TRANSITION (HUB.BITER7):** From over HUB VOR/DME on HUB R-284 to BOCK INT, then on IDU R-085 to IDU VORTAC, then on IDU R-281 to WLEEE INT. Thence . . . .

**HUMBLE TRANSITION (IAH.BITER7):** From over IAH VORTAC on IAH R-262 to SHYNR INT, then on IDU R-085 to IDU VORTAC, then on IDU R-281 to WLEEE INT. Thence . . . .

**INDUSTRY TRANSITION (IDU.BITER7):** From over IDU VORTAC on IDU R-281 to WLEEE INT. Thence . . . .

**LUFKIN TRANSITION (LFK.BITER7):** From over LFK VORTAC on LFK R-222 to BOCK INT, then on IDU R-085 to IDU VORTAC, then on IDU R-281 to WLEEE INT. Thence . . . .

. . . . From over WLEEE on IDU R-281 to BITER, then on IDU R-281 to ISHOV, then on IDU R-281 to BASTO. Expect vectors to final approach course at or prior to BASTO.

NOTE: RADAR required.  
 NOTE: DME required.  
 NOTE: DME/DME/IRU or GPS equipped aircraft must file the WLEEE (RNAV) or WAILN (RNAV) STAR.

NOTE: Chart not to scale.

SC-3, 01 FEB 2018 to 01 MAR 2018

# BITER SEVEN ARRIVAL

AUSTIN, TEXAS