

AUSTIN, TEXAS

AL-502 (FAA)

18144

LOC I-RUM 108.7	APP CRS 126°	Rwy Idg TDZE Apt Elev	5601 593 595
---------------------------	------------------------	-----------------------------	---

ILS or LOC RWY 13

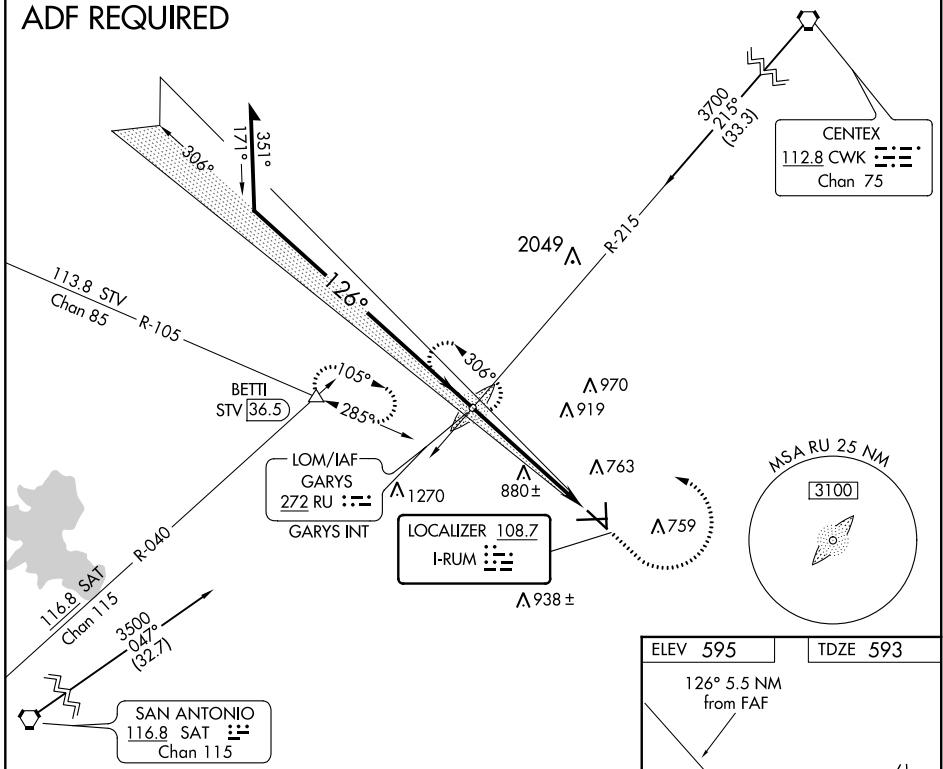
SAN MARCOS RGNL (HYI)

NA Circling Cat E NA southwest of Rwy 13-31.
For inop MALSRL, increase S-ILS 13 Cat E visibility $\frac{1}{4}$ mile, and S-LOC 13 Cat E $\frac{1}{2}$ mile. ADF required.

MALSRL MISSED APPROACH: Climb to 2000 then climbing left turn to 3200 direct GARYS LOM and hold.

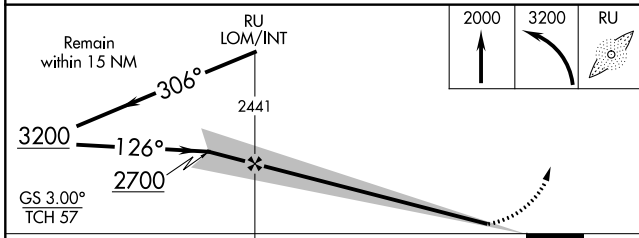
ATIS ★ 120.825	AUSTIN APP CON 119.0 370.85	SAN MARCOS TOWER ★ 126.825 (CTAF) L	GND CON 120.125	CLNC DEL 120.125	CLNC DEL 121.35 (When ATCT Closed)
--------------------------	---------------------------------------	--	---------------------------	----------------------------	---

ADF REQUIRED



SC-3, 24 MAY 2018 to 21 JUN 2018

SC-3, 24 MAY 2018 to 21 JUN 2018



CATEGORY	A	B	C	D	E
S-ILS-13	793- $\frac{1}{2}$ 200 (200- $\frac{1}{2}$)				
S-LOC-13	1260- $\frac{1}{2}$ 667 (700- $\frac{1}{2}$)	1260- $\frac{1}{4}$ 667 (700- $\frac{1}{4}$)	1260- $\frac{1}{2}$ 667 (700- $\frac{1}{2}$)	1260-2 667 (700-2)	1260-2 667 (700-2)
CIRCLING	1260-1 665 (700-1)	1260- $\frac{3}{4}$ 665 (700- $\frac{3}{4}$)	1260-2 665 (700-2)	1280- $\frac{2}{2}$ 685 (700- $\frac{2}{2}$)	1280- $\frac{2}{2}$ 685 (700- $\frac{2}{2}$)

ELEV 595	TDZE 593
----------	----------

MIRL Rwy 8-26, 13-31, and 17-35 **L**
REIL Rwy 8 and 26

FAF to MAP 5.5 NM					
Knots	60	90	120	150	180
Min:Sec	5:30	3:40	2:45	2:12	1:50

AUSTIN, TEXAS

Amdt 6B 23JUN16

29°54'N-97°52'W

SAN MARCOS RGNL (HYI)

ILS or LOC RWY 13