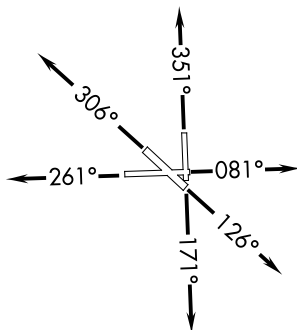
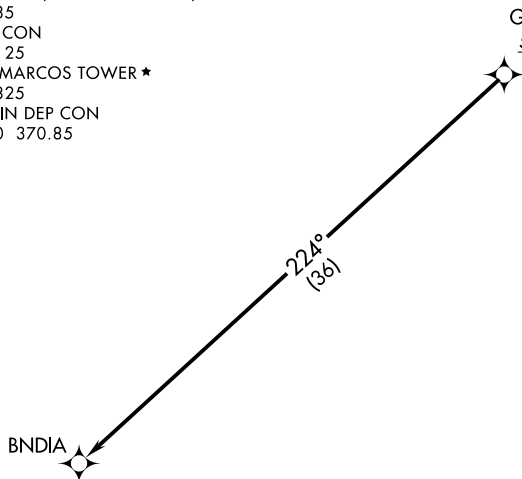


# BNDIA TWO DEPARTURE (RNAV)

**TOP ALTITUDE:  
ASSIGNED BY ATC**

ATIS ★  
 120.825  
 CLNC DEL (when tower closed)  
 121.35  
 GND CON  
 120.125  
 SAN MARCOS TOWER ★  
 126.825  
 AUSTIN DEP CON  
 119.0 370.85

GARDS  
5000



NOTE: RADAR required.  
 NOTE: DME/DME/IRU or GPS required.  
 NOTE: RNAV-1.

**TAKEOFF MINIMUMS:**

Rwys 8, 13, 17, 26: Standard.  
 Rwy 31: Standard with a minimum climb of 210' per NM to 2600.  
 Rwy 35: Standard with a minimum climb of 230' per NM to 2600.

NOTE: Chart not to scale.



## DEPARTURE ROUTE DESCRIPTION

TAKEOFF RWY 8: Climb heading 081° or as assigned by ATC for RADAR vectors to cross GARDS at or above 5000. Thence...  
TAKEOFF RWY 13: Climb heading 126° or as assigned by ATC for RADAR vectors to cross GARDS at or above 5000. Thence...  
TAKEOFF RWY 17: Climb heading 171° or as assigned by ATC for RADAR vectors to cross GARDS at or above 5000. Thence...  
TAKEOFF RWY 26: Climb heading 261° or as assigned by ATC for RADAR vectors to cross GARDS at or above 5000. Thence...  
TAKEOFF RWY 31: Climb heading 306° or as assigned by ATC for RADAR vectors to cross GARDS at or above 5000. Thence...  
TAKEOFF RWY 35: Climb heading 351° or as assigned by ATC for RADAR vectors to cross GARDS at or above 5000. Thence...

... on track 224° to BNDIA. Maintain altitude assigned by ATC. Expect filed altitude 10 minutes after departure.

# BNDIA TWO DEPARTURE (RNAV)