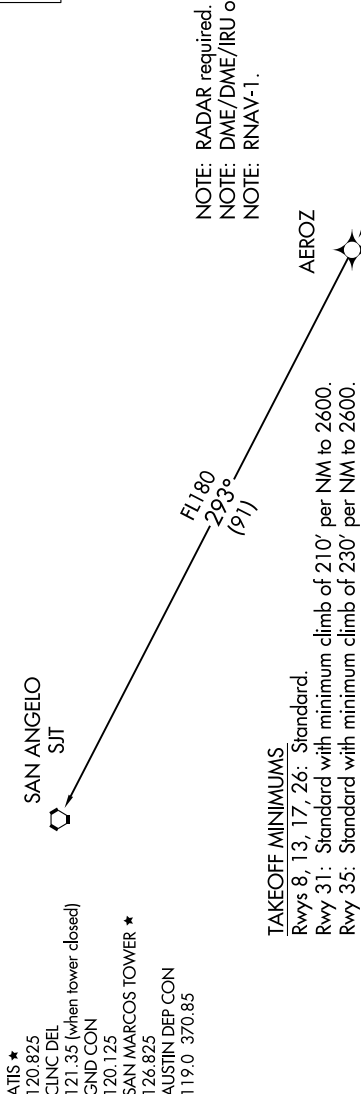
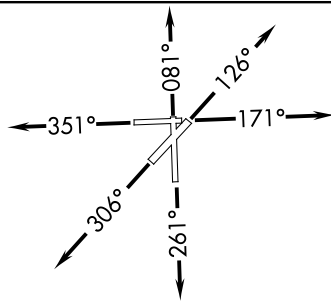


TOP ALTITUDE:
ASSIGNED BY ATC



NOTE: RADAR required.
NOTE: DME/DME/IRU or GPS required.
NOTE: RNAV-1.



TAKEOFF MINIMUMS

Rwys 8, 13, 17, 26: Standard.
Rwy 31: Standard with minimum climb of 210' per NM to 2600.
Rwy 35: Standard with minimum climb of 230' per NM to 2600.

NOTE: Chart not to scale.

DEPARTURE ROUTE DESCRIPTION

TAKEOFF RWY 8: Climb heading 081° or as assigned by ATC for RADAR vectors to cross AMUSE at or above 5000. Thence....

TAKEOFF RWY 13: Climb heading 126° or as assigned by ATC for RADAR vectors to cross AMUSE at or above 5000. Thence....

TAKEOFF RWY 17: Climb heading 171° or as assigned by ATC for RADAR vectors to cross AMUSE at or above 5000. Thence....

TAKEOFF RWY 26: Climb heading 261° or as assigned by ATC for RADAR vectors to cross AMUSE at or above 5000. Thence....

TAKEOFF RWY 31: Climb heading 306° or as assigned by ATC for RADAR vectors to cross AMUSE at or above 5000. Thence....

TAKEOFF RWY 35: Climb heading 351° or as assigned by ATC for RADAR vectors to cross AMUSE at or above 5000. Thence....

... on track 293° to AEROZ, then on SAN ANGELO TRANSITION. Maintain altitude assigned by ATC. Expect filed altitude 10 minutes after departure.

SAN ANGELO TRANSITION (AEROZ1.SJT):

SC-3, 01 FEB 2018 to 01 MAR 2018

SC-3, 01 FEB 2018 to 01 MAR 2018