

AUSTIN, TEXAS

AL-502 (FAA)

18144

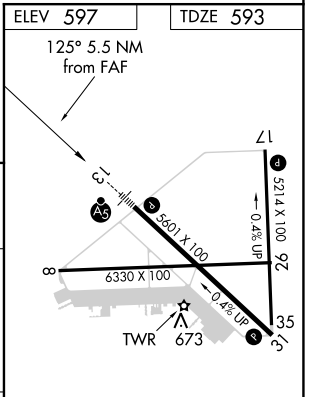
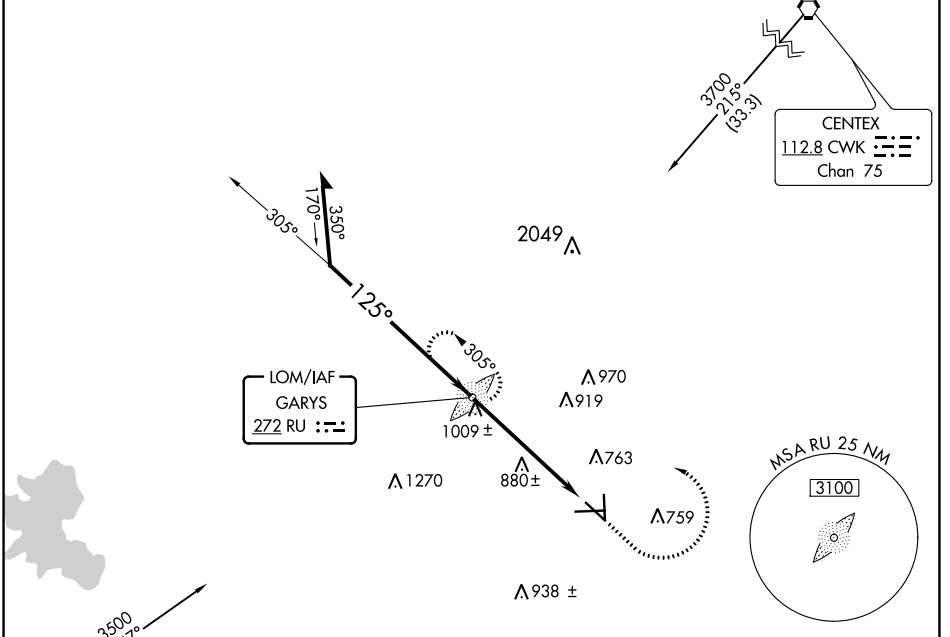
LOM RU 272	APP CRS 125°	Rwy Idg TDZE Apt Elev	5601 593 597
----------------------	------------------------	-----------------------------	---

NDB RWY 13

SAN MARCOS RGNL (HYI)

<p>NA</p>	<p>MALSR</p>	<p>MISSED APPROACH: Climb to 2000 then climbing left turn to 3200 direct RU LOM and hold.</p>
------------------	--------------	---

<p>ATIS ★ 120.825</p>	<p>AUSTIN APP CON 119.0 370.85</p>	<p>SAN MARCOS TOWER ★ 126.825 (CTAF) L</p>	<p>GND CON 120.125</p>	<p>CLNC DEL 120.125</p>	<p>CLNC DEL 121.35 (When ATCT Closed)</p>
----------------------------------	---	--	-----------------------------------	------------------------------------	--



	RU LOM	2000	3200	RU
Remain within 10 NM	3200	305°	125°	2700
			3.49°	TCH 55
				5.5 NM

CATEGORY	A	B	C	D	MIRL Rwy 8-26, 13-31, and 17-35 L	
S-13	1240-3/4	647 (700-3/4)	1240-1 1/4 647 (700-1 1/4)	1240-1 3/4 647 (700-1 3/4)	REIL Rwy 8 and 26	
CIRCLING	1240-1	643 (700-1)	1240-1 3/4 643 (700-1 3/4)	1240-2 643 (700-2)	FAF to MAP 5.5 NM	
	Knots	60	90	120	150	180
	Min:Sec	5:30	3:40	2:45	2:12	1:50

AUSTIN, TEXAS
Amdt 5A 23JUN16

29°54'N-97°52'W

SAN MARCOS RGNL (HYI) NDB RWY 13

SC-3, 11 OCT 2018 to 08 NOV 2018

SC-3, 11 OCT 2018 to 08 NOV 2018