

WALNUT RIDGE, ARKANSAS

AL-441 (FAA)

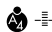
18256

WAAS CH <b>77825</b> <b>W04A</b>	APP CRS <b>044°</b>	Rwy Idg TDZE Apt Elev	<b>6001</b> <b>279</b> <b>279</b>
--	------------------------	-----------------------------	---

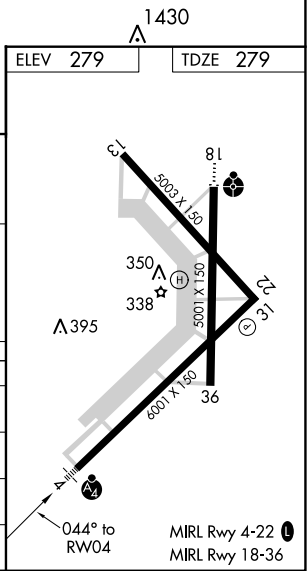
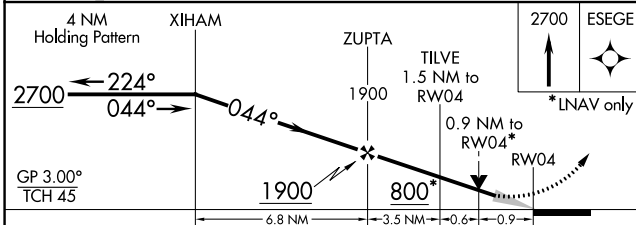
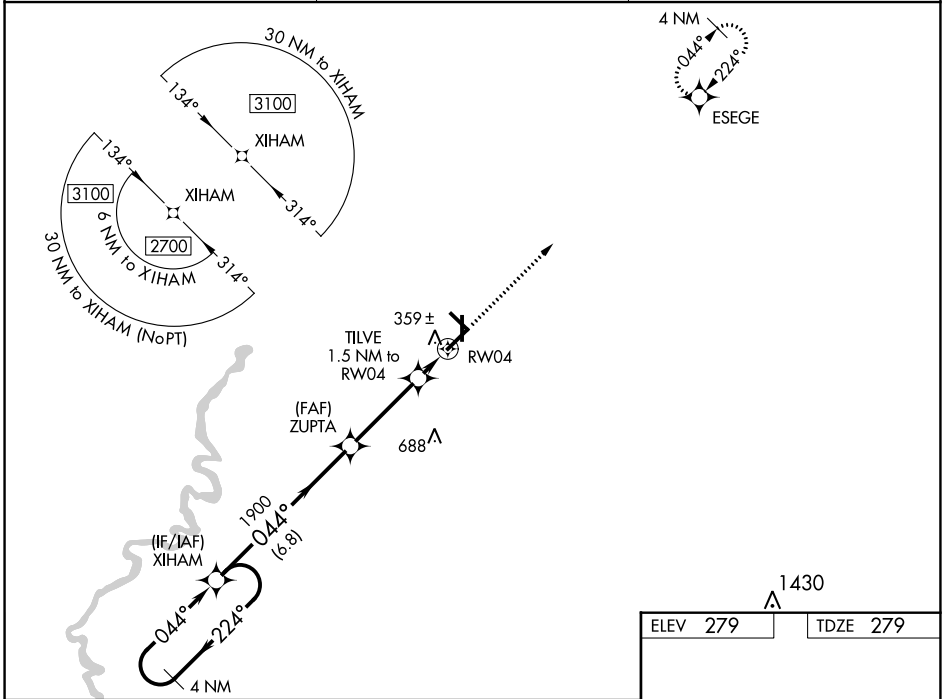
# RNAV (GPS) RWY 4

WALNUT RIDGE RGNL (A.R.G)

**⚠** Baro-VNAV NA when using Jonesboro altimeter setting. For uncompensated Baro-VNAV systems, LNAV/VNAV NA below -15°C (5°F) or above 42°C (107°F). DME/DME RNP-0.3 NA. VDP NA with Jonesboro altimeter setting. When local altimeter setting not received, use Jonesboro altimeter setting and increase all DA 54 feet and all MDA 60 feet; increase LPV and LNAV/VNAV all Cats visibility 1/4 mile and LNAV Cat C and D visibility 1/8 mile.

**MALSF**  
 MISSED APPROACH:  
Climb to 2700 direct ESEGE and hold.

AWOS-3PT <b>135.925</b>	MEMPHIS CENTER <b>120.075 289.4</b>	UNICOM <b>122.8 (CTAF) 0</b>
----------------------------	--	---------------------------------



CATEGORY	A	B	C	D
LPV DA		529-3/4	250 (300-3/4)	
LNAV/VNAV DA		529-3/4	250 (300-3/4)	
LNAV MDA		620-1	341 (400-1)	
CIRCLING	760-1	481 (500-1)	760-1 1/2 481 (500-1 1/2)	840-2 561 (600-2)

WALNUT RIDGE, ARKANSAS  
 Orig-A 29MAY14

36°07'N-90°56' W

# WALNUT RIDGE RGNL (A.R.G) RNAV (GPS) RWY 4

SC-1, 06 DEC 2018 to 03 JAN 2019

SC-1, 06 DEC 2018 to 03 JAN 2019