

WALNUT RIDGE, ARKANSAS

AL-441 (FAA)

16203

WAAS CH 45825 W36A	APP CRS 359°	Rwy Idg TDZE Apt Elev	5001 274 279
--	------------------------	-----------------------------	---

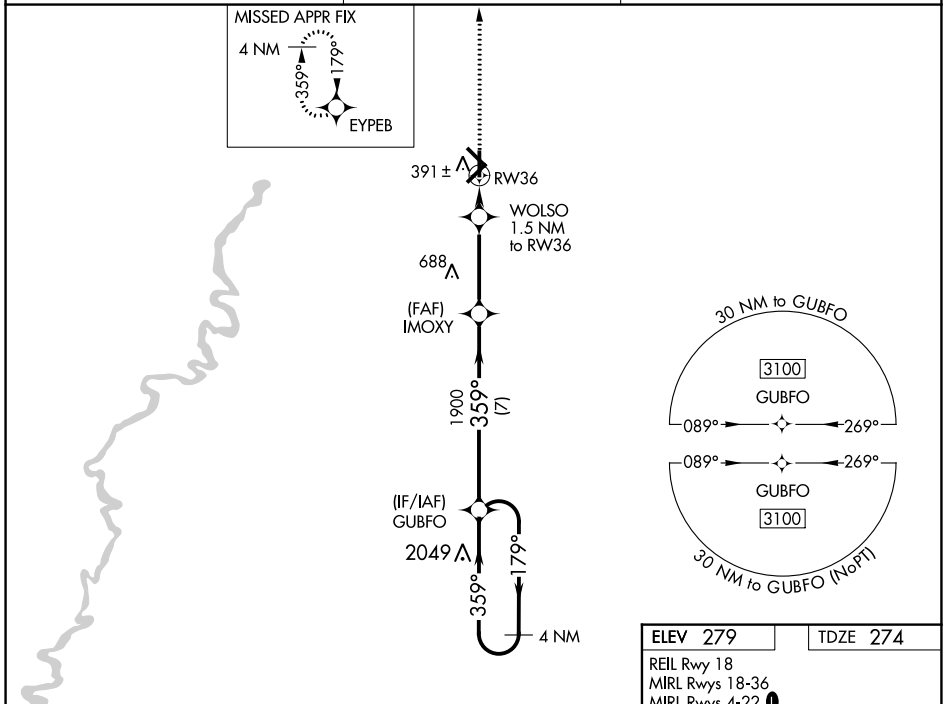
RNAV (GPS) RWY 36

WALNUT RIDGE RGNL (A.R.G)

⚠ Baro-VNAV NA when using Jonesboro altimeter setting. For uncompensated Baro-VNAV systems, LNAV/VNAV NA below -15°C (5°F) or above 42°C (107°F). DME/DME RNP-0.3 NA. When local altimeter setting not received, use Jonesboro altimeter setting and increase all DA 54 feet and all MDA 60 feet; increase LPV all Cats and LNAV/VNAV all Cats visibility 1/8 mile and LNAV Cat C and D visibility 1/4 mile.

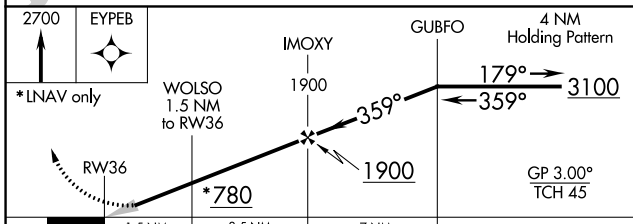
MISSED APPROACH:
Climb to 2700 direct EYPEB and hold.

AWOS-3 135.925	MEMPHIS CENTER 120.075 289.4	UNICOM 122.8 (CTAF) 0
--------------------------	--	---------------------------------

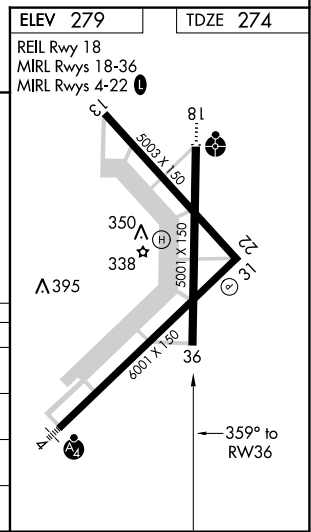


SC-1, 22 JUN 2017 to 20 JUL 2017

SC-1, 22 JUN 2017 to 20 JUL 2017



CATEGORY	A	B	C	D
LPV DA		474-1	200 (200-1)	
LNAV/VNAV DA		574-1	300 (300-1)	
LNAV MDA	660-1	386 (400-1)	660-1 1/8	386 (400-1 1/8)
CIRCLING	760-1	481 (500-1)	760-1 1/2	840-2
			481 (500-1 1/2)	561 (600-2)



WALNUT RIDGE, ARKANSAS
Amdt 1A 02APR15

36°07'N-90°56'W

WALNUT RIDGE RGNL (A.R.G) RNAV (GPS) RWY 36