

WALNUT RIDGE, ARKANSAS

AL-441 (FAA)

17341

WAAS CH <b>82125</b> <b>W22A</b>	APP CRS <b>224°</b>	Rwy Idg <b>6001</b> TDZE <b>274</b> Apt Elev <b>279</b>
--	------------------------	---

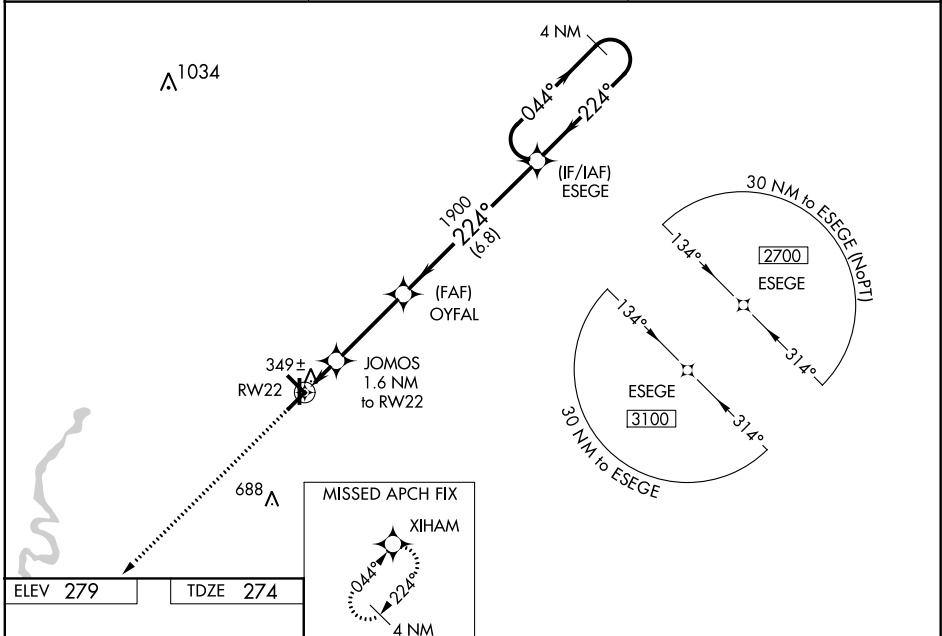
# RNAV (GPS) RWY 22

WALNUT RIDGE RGNL (A.R.G)

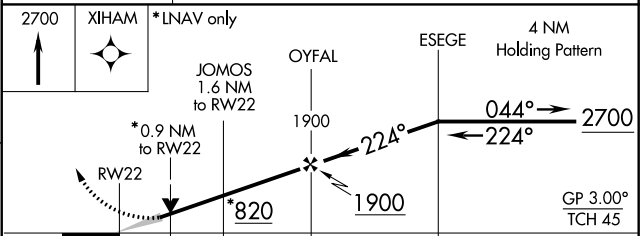
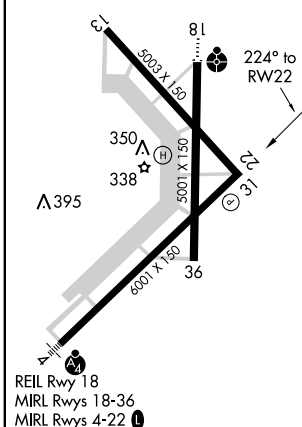
**⚠** Baro-VNAV NA when using Jonesboro altimeter setting. For uncompensated Baro-VNAV systems, LNAV/VNAV NA below -1.5°C (5°F) or above 42°C (107°F). DME/DME RNP-0.3 NA.  
**⚠** VDP NA with Jonesboro altimeter setting. When local altimeter setting not received, use Jonesboro altimeter setting and increase all DA 54 feet and all MDA 60 feet; increase LPV all Cats visibility ¼ mile, LNAV/VNAV all Cats visibility ¼ mile and LNAV Cat C and D visibility ⅓ mile.

**MISSED APPROACH:**  
Climb to 2700 direct XIHAM and hold.

AWOS-3PT <b>135.925</b>	MEMPHIS CENTER <b>120.075 289.4</b>	UNICOM <b>122.8 (CTAF)</b> <b>📻</b>
----------------------------	--	--



ELEV 279	TDZE 274
----------	----------



CATEGORY	A	B	C	D
LPV DA		524-1	250 (300-1)	
LNAV/VNAV DA		524-1	250 (300-1)	
LNAV MDA		600-1	326 (400-1)	
CIRCLING	760-1	481 (500-1)	760-1½ 481 (500-1½)	840-2 561 (600-2)

WALNUT RIDGE, ARKANSAS  
Amdt 1A 02APR15

36°07'N-90°56'W

# WALNUT RIDGE RGNL (A.R.G) RNAV (GPS) RWY 22

SC-1, 16 AUG 2018 to 13 SEP 2018

SC-1, 16 AUG 2018 to 13 SEP 2018