

WALNUT RIDGE, ARKANSAS

AL-441 (FAA)

17341

WAAS CH 65925 W18A	APP CRS 179°	Rwy Idg TDZE Apt Elev	5001 275 279
--	------------------------	-----------------------------	---

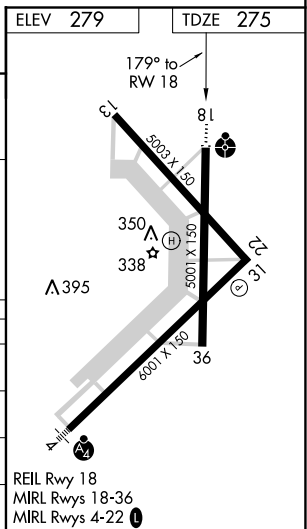
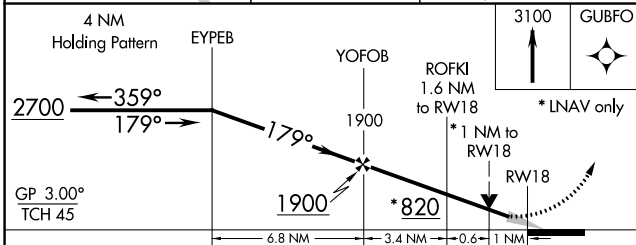
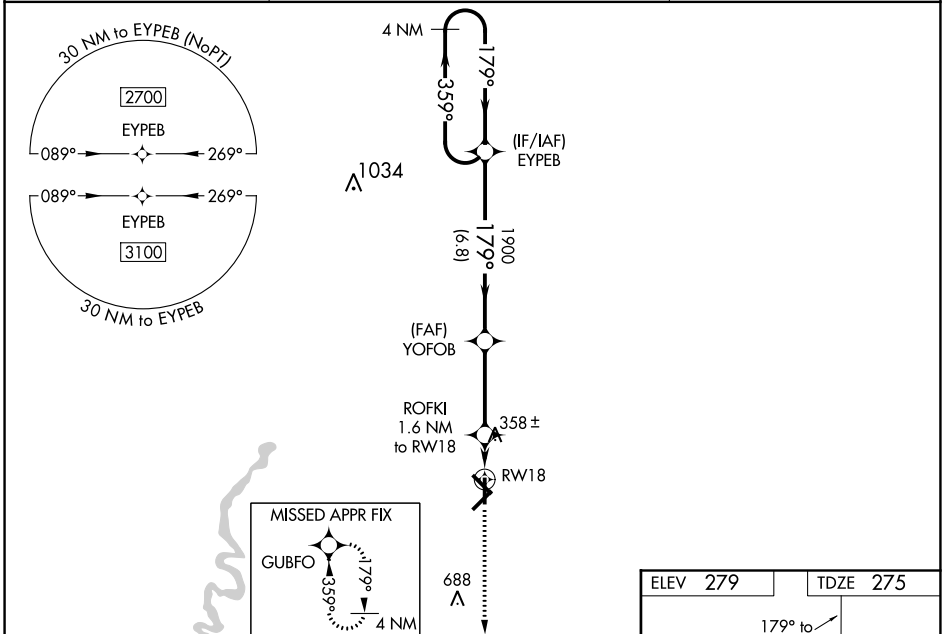
RNAV (GPS) RWY 18

WALNUT RIDGE RGNL (A.R.G)

⚠ For uncompensated Baro-VNAV systems, LNAV/VNAV NA below -15°C (5°F) or above 42°C (107°F). DME/DME RNP-0.3 NA. When local altimeter setting not received, use Jonesboro altimeter setting and increase all DA 54 feet and all MDA 60 feet; increase LNAV/VNAV all Cats visibility ¼ mile and LNAV Cat C and D visibility ⅓ mile. For inoperative ODALS, increase LPV all Cats and LNAV/VNAV all Cats visibility to ¾ mile and LNAV Cat C and D visibility to 1 mile. When using Jonesboro altimeter setting; for inoperative ODALS, increase LPV all Cats visibility to ⅘ mile, LNAV/VNAV all Cats visibility to 1 mile and LNAV Cat C and D visibility to 1 ⅓ mile. Baro-VNAV and VDP NA with Jonesboro altimeter setting.

ODALS
MISSED APPROACH:
Climb to 3100 direct
GUBFO and hold.

AWOS-3PT 135.925	MEMPHIS CENTER 120.075 289.4	UNICOM 122.8 (CTAF) 0
----------------------------	--	--



CATEGORY	A	B	C	D
LPV DA		475-¾	200 (200-¾)	
LNAV/VNAV DA		525-¾	250 (300-¾)	
LNAV MDA	620-¾	345 (400-¾)	620-⅞	345 (400-⅞)
CIRCLING	760-1	481 (500-1)	760-1½ 481 (500-1½)	840-2 561 (600-2)

WALNUT RIDGE, ARKANSAS
Amdt 1A 02APR15

36°07'N-90°56'W

WALNUT RIDGE RGNL (A.R.G) RNAV (GPS) RWY 18

SC-1, 16 AUG 2018 to 13 SEP 2018

SC-1, 16 AUG 2018 to 13 SEP 2018