

LAS VEGAS, NEVADA

HI-TACAN RWY 3R

TACAN LSV Chan 12	APCH CRS 029°	Rwy ldg TDZE Arprt Elev	10,051 1833 1869
----------------------	------------------	-------------------------------	------------------------

AL-227 (USAF)

NELLIS AFB (KLSV)

RADAR required.

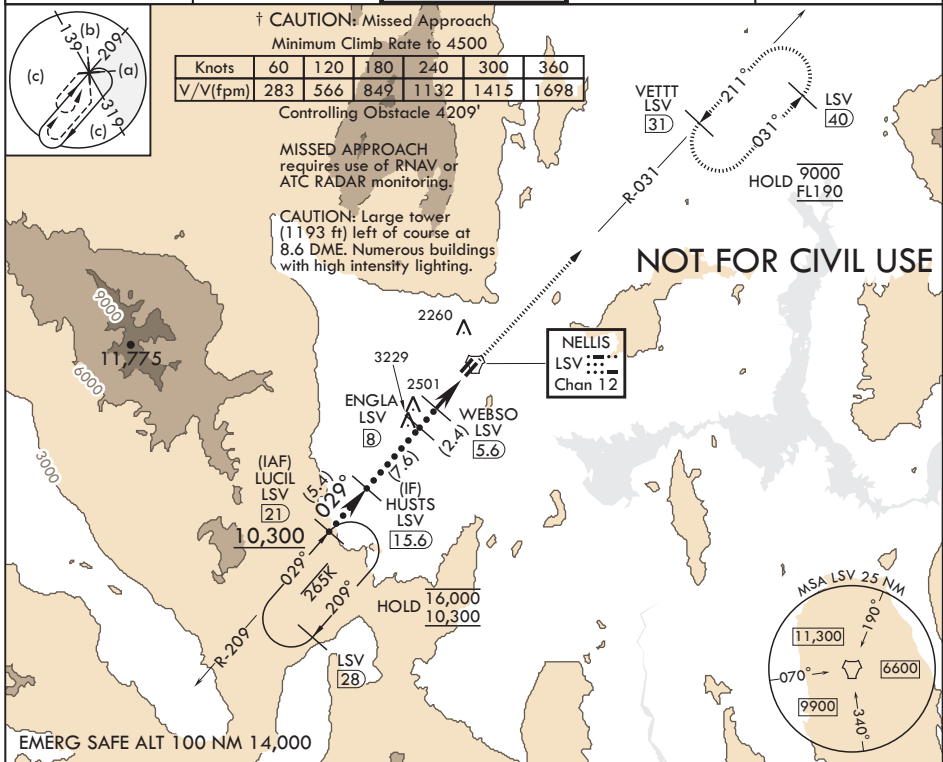
⚠ * When ALS inop, increase vis to 1 3/8 miles.
** Circling NA SE of Rwy 3R-21L.

ALS-1

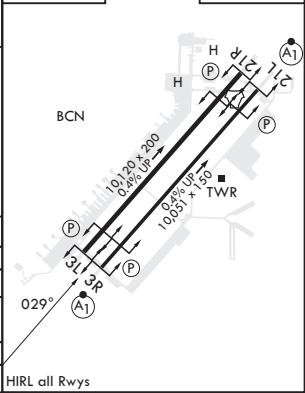
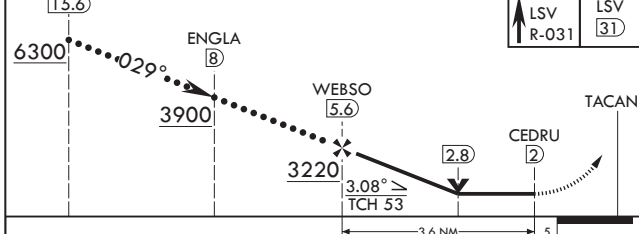


MISSED APPROACH: Climb to 9000 on LSV TACAN R-031 to VETT and hold.

ATIS 270.1	APP CON 124.95 273.55	TOWER 132.55 327.0	GND CON 121.8 275.8	CLNC DEL 120.9 289.4
---------------	--------------------------	-----------------------	------------------------	-------------------------



HUSTS 15.6	ENGLA 8	WEBSO 5.6	TACAN	9000 LSV R-031	VETT LSV 31	ELEV 1869	TDZE 1833
---------------	------------	--------------	-------	----------------------	-------------------	-----------	-----------



CATEGORY	C	D	E
S-3R	2940-3	1107	(1100-3)
C CIRCLING**	2940-3	1071	(1100-3) 3220-3 1351 (1400-3)
† BELOW MINIMA REQUIRES MISSED APPROACH CLIMB GRADIENT			
S-3R*	2300/50	467	(500-1)

LAS VEGAS, NEVADA
Amdt 10 10AUG23

36°14'N - 115°02'W

NELLIS AFB (KLSV)

HI-TACAN RWY 3R

SW-4, 16 MAY 2024 to 13 JUN 2024

SW-4, 16 MAY 2024 to 13 JUN 2024